

Soak It Up Adoption

GSI Site Visit Checklist

Green Stormwater Infrastructure (GSI) Care Activities	Performed by Adoption Partner	Performed by PWD or Contractor During Scheduled Visits
Remove trash & debris from GSI	✓	✓
Remove trash & debris from upstream curb line	✓	✗
Monitor plant health	✓	✓
Check for erosion or sedimentation in GSI	✓	✓
Look for structural damage to GSI (grates, covers, etc)	✓	✓
Check for graffiti on GSI signage & clean if necessary	✓	✓
Monitor water ponding for 72 hours after major storms	✓	✓
Check integrity of inlet filter bags	✓	✓
Maintain & repair site infrastructure	✗	✓
Add soil, fertilizer, or other growing medium	✗	✓
Plant or remove vegetation	✗	✓
Repair structural damage to the facility	✗	✓
Water plants	✗	✓

Contacts

Philadelphia Water Department
Adoption Program – Dan Schupsky
 E: daniel.schupsky@phila.gov
 P: 215.683.3405

All Other Concerns – Customer Service
 P: 215-685-6300

Philadelphia Police Department
 P: 215-685-9500
 Emergencies call 911

Animal Care and Control Services
 P: 215-685-0918

To report a non-Water Department issue,
 such as dumping or local potholes needing
 repair, dial 311 or use the Philly 311 app.

Key

✓ = Yes

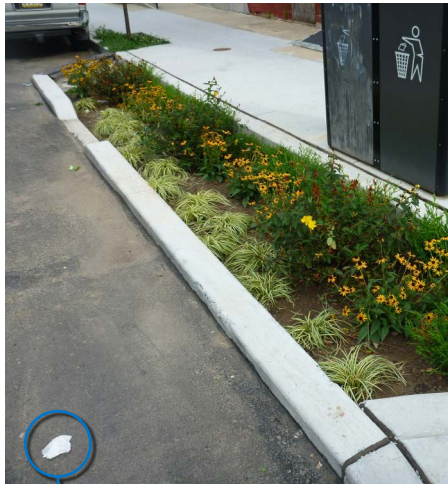
✗ = No



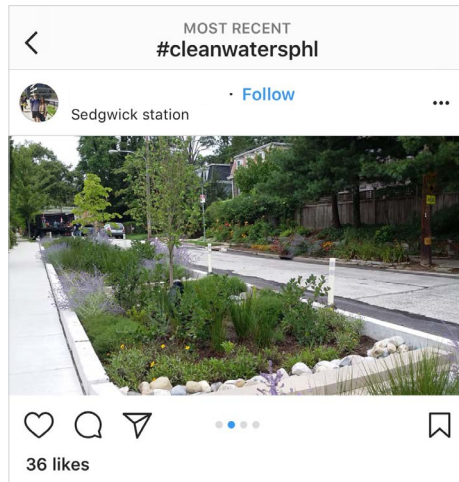
Important: Please do your best to not walk on GSI soil. This compacts the soil and inhibits proper drainage.

Tips for Successful Site Visits

Keeping GSI clean is a great way to make sure your neighborhood looks its best. Paying a little extra attention to places where water enters GSI features and overflows through drains will make sure the systems protect our waterways effectively.



Removing litter and debris from the surrounding area before a storm can carry it into GSI is a necessary preventative measure.

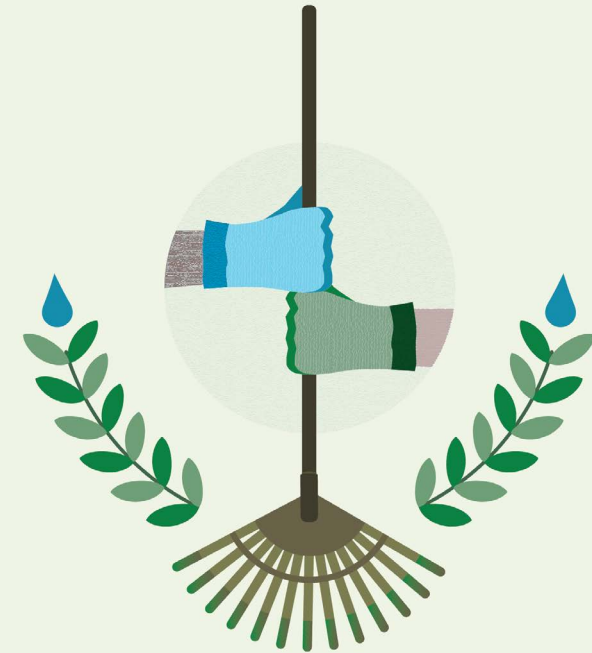


Don't forget to take photos!

We love seeing partners' good work on social media under the hashtag **#cleanwatersPHL**.

PHILADELPHIA
WATER
— DEPARTMENT —

Green City,
Clean Waters



Soak It Up **Adoption**

GSI Care Guide

Bring this with you on your site visits!

Neighborhood specific reporting forms available at:
www.phillywatersheds.org/maintain