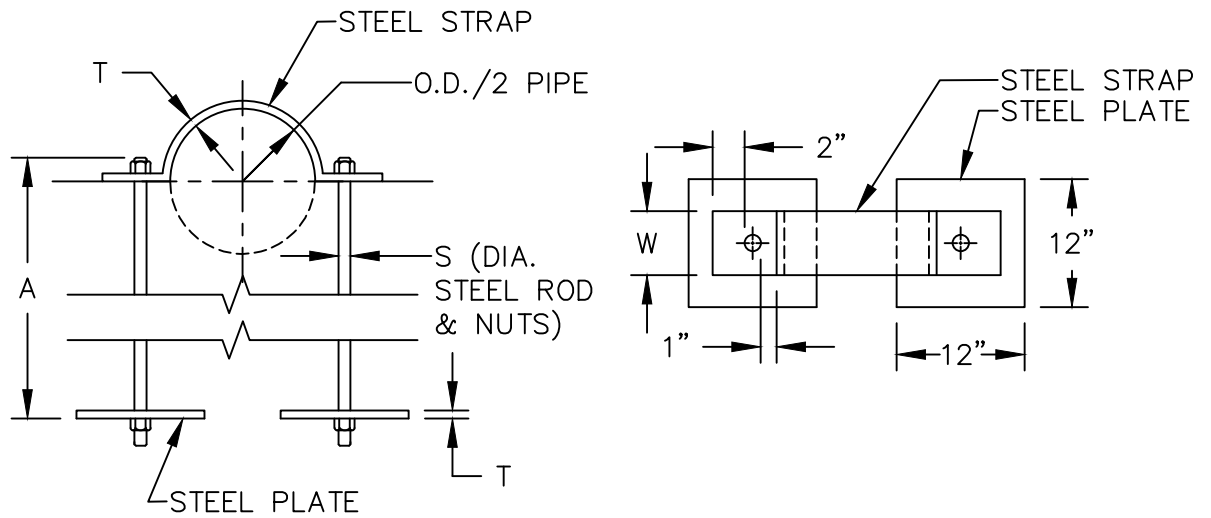


ELEVATION

SECTION



ROD AND STRAP HARNESS DETAILS

NOTES:

1. WRAP FITTING WITH PLASTIC WRAP BEFORE PLACING CONCRETE
2. CONCRETE SHALL BE CLASS 15-1
3. CONCRETE SHALL HAVE A 2" MINIMUM CLEARANCE UNDER BELLS & GLANDS
4. APPLY COLD BITUMEN COATING AS SPECIFIED
5. STRAP & PLATES TO BE MADE OF A-36 STEEL
6. RODS TO BE A-193-GRADE B7
7. NUTS TO BE A-194-GRADE 4-HEAVY HEXAGON

PHILADELPHIA WATER — DEPARTMENT —	CONCRETE ANCHORS FOR VERTICAL 1/8, 1/16, 1/32 BENDS (TOP)		
	DRAWN BY: D&B GUARINO	DATE: FEB. 2022	
	CHECKED BY: WD	DETAIL ID: THRUST-05-A	REV.: 1