
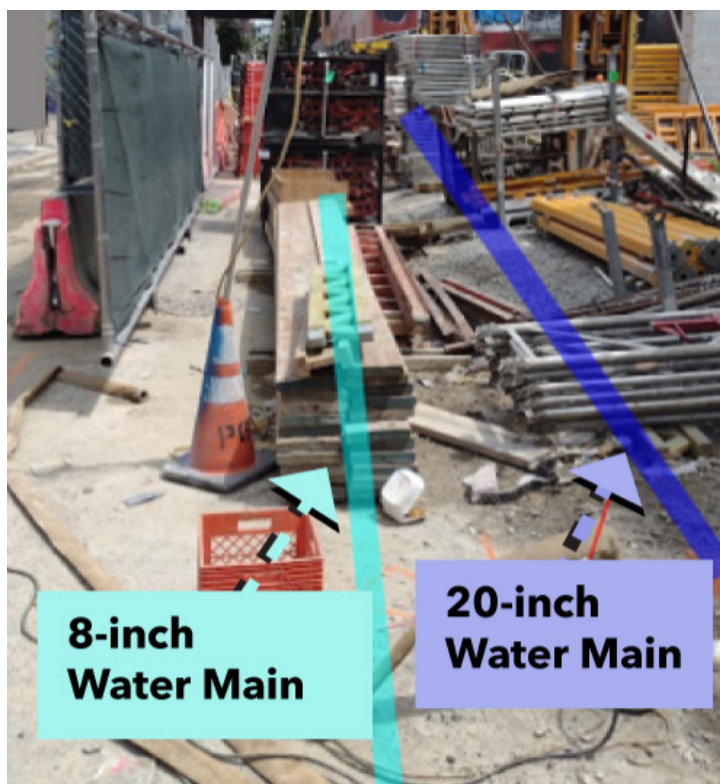


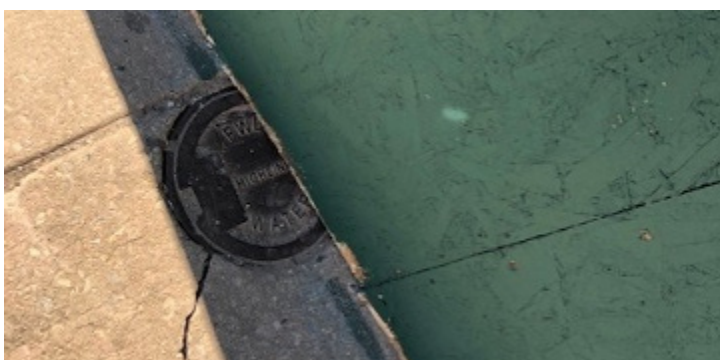
# Working in the Street:

## Excavation and Access near PWD Infrastructure

 **Use caution near or within a street or Right-of-Way (ROW).** Water mains, sewers, and green infrastructure are close to the surface. Maintain access for any crews or emergency work.



**Above:** Material placement can severely delay emergency repairs and impact water customers.



**Above:** Construction fencing placed on top of a water main. This location wasn't shown on the approved E&S plan. The fence restricts access to infrastructure in an emergency.

### Potential Issues

**Many improvements in the ROW can impact infrastructure, including:**

- *Curb cuts*
- *Utility trenches or depressions*
- *Vaults*
- *Egress wells, and more*

**A location shift from approved plans** while in the field. We review plans for potential access issues.

**Construction equipment on top of sewers or water mains** can stress the pipes and cause damage, especially crane footings.

**Sedimentation Control:** During heavy rain, loose soil can wash away from the site. This leads to clogged inlets, standing water on the street and sewer damage.



**Issues can result in costly repairs, fees, fines, or a Stop Work Order.**

## Best Practices

### 1 Call PA One Call at 8-1-1.

Arrange a field mark-out of the utilities surrounding your project.

### 2 Stay five (5) feet away from PWD infrastructure

where feasible when excavating, whether on site or within the ROW.

### 3 Maintain PWD access to infrastructure in case of emergency.

- **Temporary staging equipment:** Avoid placing materials and equipment on top of water mains and sewers. Be prepared to move them quickly in case of emergency.
- **Staging locations:** For sites greater than 5,000 SF, staging locations must match the approved Erosion & Sediment Control plan. The E&S plan must always be kept on site.
- **Crane footing locations:** Crane footings may not be placed within the public ROW. If unavoidable, plans must be reviewed and approved by PWD's Design Unit. Infrastructure relocation may be required.

### 4 Use proper sheeting and shoring.

Follow all required City and OSHA requirements. Refer to Philadelphia Code Section P-1503.2 for more information.



Above: On-site excavation without proper shoring puts water mains at risk.

## You must contact us immediately in the event of damage:

### Sewers, Water Mains, Fire Hydrants, Inlets:

If damage occurs while digging: Secure the area, maintain flow, and call the PWD Contact Center: **(215) 685-6300**

### If damage occurs installing or repairing a 5" or 6" sewer lateral,

call the Water Transport Records Inspectors: **(215) 410-6470**, and PWD Contact Center: **(215) 685-6300**

### If damage occurs while installing or repairing a sewer lateral 8" or greater,

call the Plumbing Repairs Program Inspectors at **(215) 397-7097**, and PWD Contact Center: **(215) 685-6300**

### Green Stormwater Infrastructure:

If you damage GSI, such as a tree trench or vegetated planter, call Green Stormwater Operations at **(215) 300-9079**