

Project Number 50120

# McPherson Streets

- Rosehill St., E Clearfield St. to E Allegheny Ave.
- N Howard St., E Somerset St. to W Lehigh Ave.
- B St., E Clearfield St. to E Lippincott St.
- Hart Lane, Boudinot St. to Hurley St.
- Ormes St., William St. to Cambria St.
- Cambria St., Rosehill St. to Ormes St.
- A St., E Gurney St. to E Somerset St.
- E Cambria St., Rosehill St. to C St.
- C St., E Cambria St. to Rosehill St.
- Rorer St., E Clearfield St. to E St.
- E Hart Lane, Hurley St. to D St.
- E Lippincott St., A St. to B St.

Green stormwater infrastructure includes a range of soil-water-plant systems that intercept stormwater, infiltrate it into the ground, evaporate a portion of it into the air, and in some cases, release a portion of it slowly back in the sewer system. PWD is installing green stormwater infrastructure throughout Philadelphia. The infrastructure installed in this location will include stormwater tree trenches, subsurface stone storage and new stormwater piping. This will allow for better control of stormwater through soil infiltration and evapotranspiration and better management of erosion and sedimentation. Better stormwater control reduces the pollutant loading on Philadelphia’s rivers and streams.

The completed project will also provide beautification of the area. New concrete footways and landscaping upgrades will improve the area aesthetically. As a part of the sidewalk, curb and street restoration, new ADA compliant curb ramps will improve safety, functionality and aesthetics along the streets where work is taking place.

Coordination with PECO, PGW, Verizon, and Comcast is ongoing during the construction. This cooperative approach minimizes inconvenience and potential future service disruptions.

Residents living on/near affected streets will receive a letter prior to this work starting. A copy of that letter can be found in the project link on the PWD Water Construction Projects map, located at this site: <https://www.phila.gov/water/aboutus/Pages/Notifications.aspx>

## Important Project Facts

Work will be conducted in 14 areas of Philadelphia’s Kensington neighborhood.

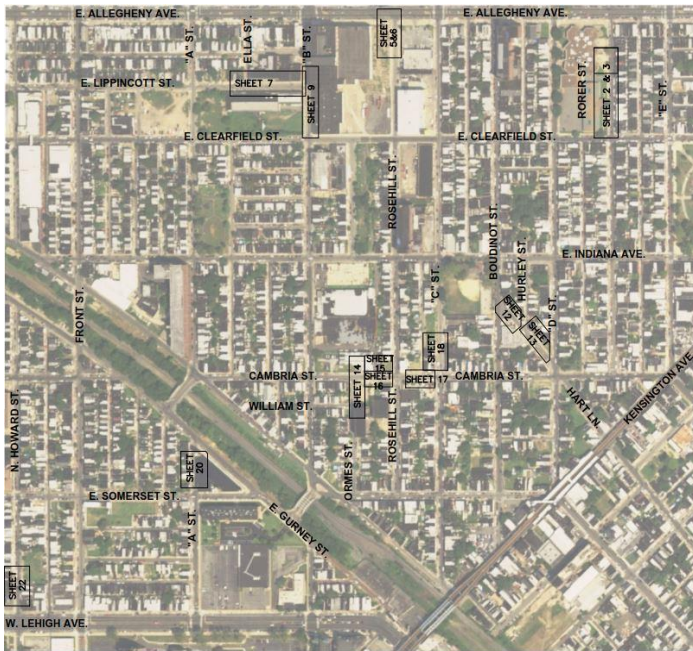
Work will be staged to minimize impact to the surrounding neighborhood.

**Anticipated start date:** November 2020

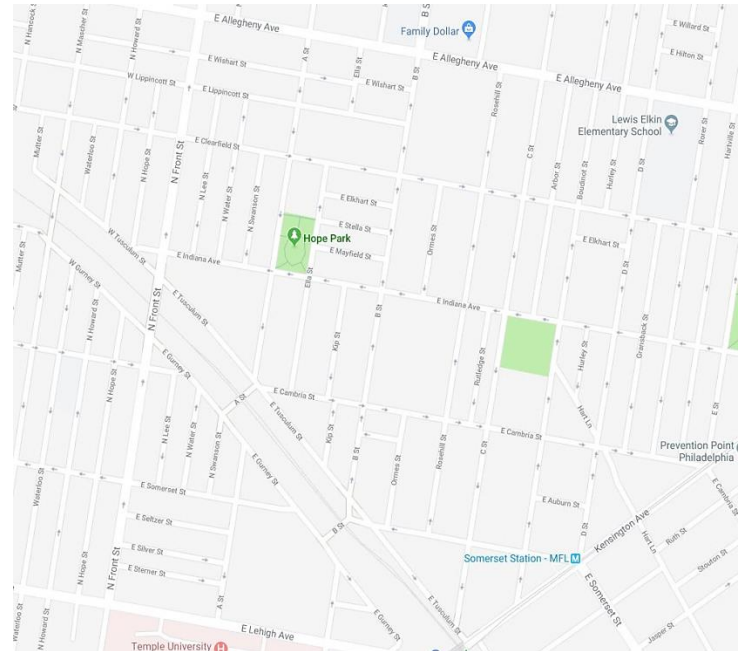
**Anticipated duration:** End of 2021

## Community Benefits

- Social Equity
  - *Green City, Clean Waters* objectives
  - Improved sidewalks and ADA compliant curb ramps
- Economic Gains
  - Reduced maintenance and repair costs
  - Reliable water pipes and sewers to provide uninterrupted service
- Environmental Benefits
  - Reduced water losses with new pipes
  - Fewer sewer back-ups
  - Increased Stormwater resilience
- Leadership
  - Collaboration with SEPTA, PECO, and PGW



**FIGURE 1.** Project location (aerial view)



**FIGURE 2.** Project location (street view)

## Frequently Asked Questions

With all construction there is a level of inconvenience. PWD is working to minimize construction impacts. Please refer to our Frequently Asked Questions for more information:

**Q. Will I lose water service during construction?**

A. No. There will be no loss of water service during construction.

**Q. How will construction affect traffic, sidewalk access, and parking?**

A. Street parking during hours of construction will be restricted. Temporary “No Parking” signs will be installed as needed for safety and construction. Signs will be installed before the start of work indicating the dates and hours that the areas will be closed. Vehicular traffic, pedestrian access, trash collection, and deliveries will be maintained. Any cars left on streets where work is scheduled to take place will be towed to a nearby public street. Project personnel will be available to direct you to your car.

**Q. What are the hours of construction?**

A. Typical construction hours are from 7:00 AM to 4:00 PM but can vary seasonally.

**Q. How dusty will my street be during construction?**

A. All construction work is subject to dirt and dust. We apologize for any inconvenience. At the end of each work day, the contractor will be responsible for keeping the site clean.

**Q. Will trees be protected during construction?**

A. A tree specialist will assess all trees on these streets prior to construction to identify measures to protect trees.

**Q. Will SEPTA service in the area be affected?**

A. No interruptions to SEPTA service are anticipated.

**Q. What is green Stormwater infrastructure (GSI)?**

A. Green stormwater infrastructure includes a range of soil-water-plant systems that intercept stormwater, infiltrate it into the ground, evaporate a portion of it into the air, and in some cases release a portion of it slowly back into the sewer system. PWD is installing green Stormwater infrastructure as part of its Green City, Clean Waters plan to reduce combined sewer overflows.

