

April 2026

Dear Philadelphia Resident,

The Philadelphia Water Department (PWD) is **starting construction on an infrastructure project** in your neighborhood. This project is called **Wynnefield Ave Corridor GSI (PWD Project #50310)**. The contractor assigned to this job is **Gessler Construction**.

Construction is Estimated to Start May 2026

Construction is expected to take place: **May 2026 – December 2026**. The project will include different types of phased infrastructure upgrades. PWD will alert you before planned service interruptions.

Stay updated on project details on the PWD project page: water.phila.gov/50310

Construction Locations	New GSI System
N 51st St. from W. Nevada St. to Wynnefield Ave.	GSI Tree Trench
N 52nd St. from W. Dauphin St. to Wynnefield Ave.	GSI Tree Trench
N. 52nd St. from Gainor Rd. to Diamond St.	GSI Tree Trench
N. 52nd St. from Wynnefield Ave. to Gainor Rd.	GSI Tree Trench & Subsurface Trench
W. Nevada St. from W. Dauphin St. to N. 51st St	GSI Tree Trench

Construction Impacts

- Typical construction hours are from 7:00 AM to 4:00 PM but can vary seasonally.
- Street parking and road access during hours of construction may be restricted. Temporary “No Parking” signs will be installed as needed for safety and construction.
- Pedestrian access, trash collection, and deliveries will be maintained.
- Residents should expect disruptions of water service for house connections to new pipes and when main connections are completed. Residents will be notified for expected shutoffs.
- Check with SEPTA for any possible detours: www.septa.org

On-site Contact Information

Look for construction team members (wearing visible PWD clothing) regularly on site:

- **Project Inspector:** Ed Holden, (302) 540-2558
- **Construction Engineer:** Georges Vegne, (267) 951-9278
- **Division Engineer:** Frank Stollenwerk, (215) 964-8036

Reason for Project

PWD Project #50310 will include the following improvements:

- **New Green Stormwater Infrastructure Systems (GSI)** to capture stormwater, protect local waterways, and prevent combined sewer overflows. (Work occurs in public streets, sidewalks, or on public parcels.)

Contact Water.Construction@phila.gov with questions. Call the PWD Hotline at 215-685-6300 for emergencies.

Philadelphia Water Department

1101 Market Street, 6th Floor
Philadelphia, PA 19107

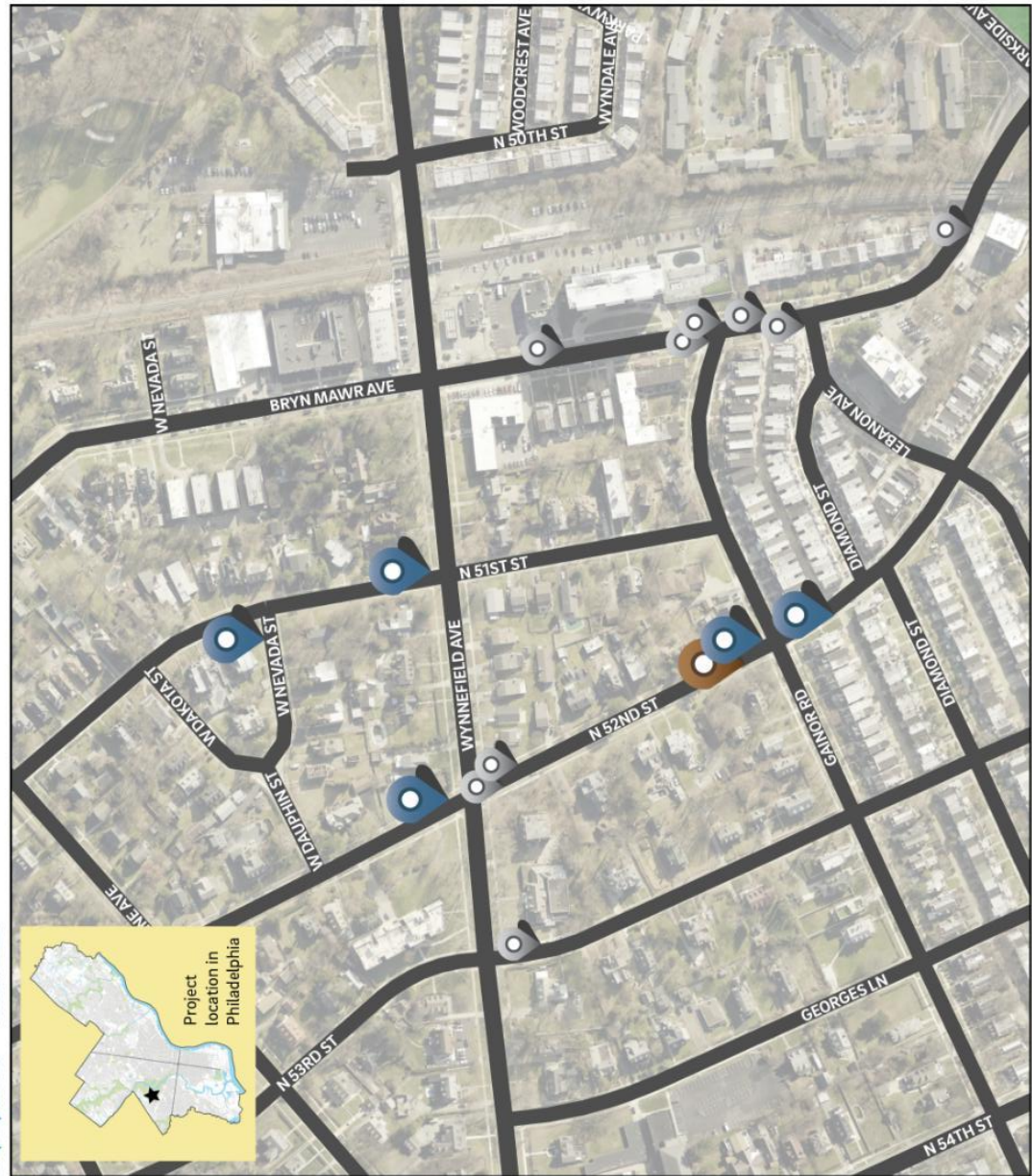
PWD's Construction Newsletter sends quarterly updates to residents via ZIP code: water.phila.gov/project-news



Wynnefield Ave Corridor

Planned PWD Infrastructure Projects

Project Number: 50310
 Project Page: water.phila.gov/projects/p50310
 Map Updated: March 2026



Planned Green Stormwater Infrastructure (GSI) Improvements



 Tree Trench



 Subsurface Trench

 Completed PWD GSI Project

This work will help protect waterways by reducing combined sewer overflows.
 Concept(s) subject to change.
 For more information reach out to water.projects@phila.gov or visit water.phila.gov/green-city.

