



Month Date, Year

Dear Customer, Property Owner, or Current Occupant,

This is the first in a series of letters to let you know that we are **planning an infrastructure construction project** in your neighborhood.

This project is called **Leon Gables (PWD Project #50313)**. The contractor assigned to this job is Carusone Construction.

Reason for Project

This project will include the following improvements:

- **New Green Stormwater Infrastructure Systems** to capture stormwater, protect local waterways, and prevent combined sewer overflows. *(This work can occur in public streets, sidewalks, and/or on public parcels.)* Learn more here: water.phila.gov/green-city/
- **New Water Mains** to increase service reliability and reduce emergency breaks
- **New Sewers** to reduce clogs and backups
- **Possible Lead Service Line (LSL) Replacement** for health and safety and in compliance with new federal regulations *(This work only happens on blocks receiving new water mains.)* Learn more here: water.phila.gov/lead/

Free Lead Service Line Replacement

When we replace a water main, we check customer service lines connected to the main. The service line is a pipe that is part of your property. It connects our water main to the meter in your property. If we find your pipe contains lead (or galvanized metal), we offer to replace the entire line, free of charge.

Timing & Phases

This project is in the pre-construction phase, and **construction is expected to begin in 3-9 months**. *This is an estimate.* The start date can vary from the anticipated timeline.

Since this project contains different types of infrastructure upgrades, we phase the work. **Each phase has its own unique timeline.** At times, you may experience short, temporary service interruptions. PWD will alert you one business day before planned, longer service interruptions.

Stay updated on project details here: water.phila.gov/projects/p50313/. We'll send a follow-up letter closer to the time of construction. Please reach out to our Construction Outreach inbox at Water.Construction@phila.gov with any questions.

Sincerely,
Philadelphia Water Department
1101 Market Street, 6th Floor
Philadelphia, PA 19107
Email: Water.Construction@phila.gov

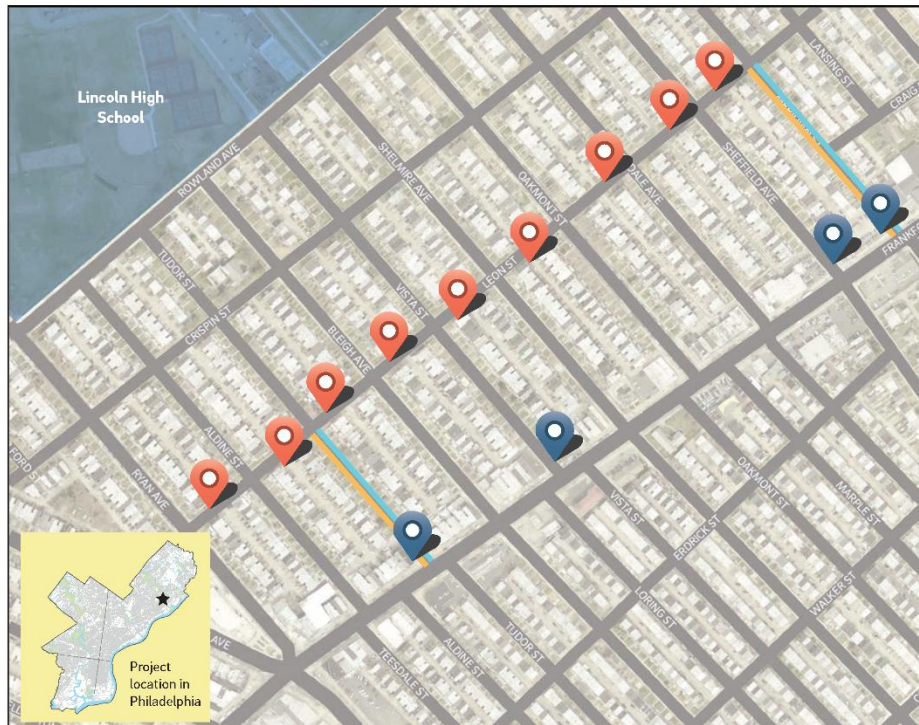
Page 1; Flip over >

Streets Impacted by This Work	New GSI Systems	New Water Main	New Sewer Main
Bleigh Ave from Frankford Ave to Leon St	GSI Inlet		
Leon St from Meridian St to Ryan Ave	Bumpouts		
Sheffield Ave from Leon St to Frankford Ave	Tree Trench		
Vista St from Leon St to Frankford Ave	Tree Trench		
Tudor St from Frankford Ave to Leon St	Tree Trench	✓	✓
Meridian St from Leon St to Frankford Ave	Tree Trench	✓	✓

Leon Gables

Planned Projects

PWD Project Number: 50313
 PWD Project Page: water.phila.gov/projects/p50313
 Last Updated: May 2025



Planned Green Stormwater Infrastructure (GSI)



Planned Infrastructure Improvements

- New Water Main
- New Sewer

This work will improve water and sewer services, and help protect waterways by reducing combined sewer overflows.

Concept subject to change. For more information reach out to Jackie.Ng@phila.gov or water.construction@phila.gov.

