

May 2026

Dear Philadelphia Resident,

Construction is starting soon for a **Philadelphia Water Department (PWD) infrastructure project** in your neighborhood. This project is called **North Cottman Green Streets (PWD Project #50338)**. The contractor assigned to this job is **Seravalli Construction**.

Construction is Estimated to Start Soon

Construction is expected to take place: **June 2026 – May 2027**. The project will include different types of phased infrastructure upgrades. PWD will alert you before planned service interruptions.

Construction Locations	New GSI System	New Water Main	New Sewer
Hawthorne St. from Cottman Ave. to Tessdale St.	Tree Trench	✓	✓
Sackett St. from Tessdale St. to Windish St.	Subsurface Trenches	✓	✓
Sackett St. from Windish St. to Nesper St.	Subsurface Trench		
Crabtree St. from Guildford St. to Ryan Ave.	Tree Trench		
Crispin St. from Cottman Ave. to Ryan Ave.	Tree Trenches	✓	
Leon St. from Cottman Ave. to St. Vincent St.	Tree Trenches		

Stay updated on project details on the PWD project page: water.phila.gov/50338.

On-site Contact Information

Look for construction team members (wearing visible PWD clothing) regularly on site:

- **Project Inspector:** Kadeem Lloyd, 267-367-9910
- **Construction Engineer:** Matthew Bresan, 267-250-0818
- **Division Engineer:** Khadija Tadimi, 267-234-1941

Construction Impacts

- Typical construction hours are from 7:00 AM to 4:00 PM but can vary seasonally.
- St. parking and road access during hours of construction may be restricted. Temporary “No Parking” signs will be installed as needed for safety and construction.
- Pedestrian access, trash collection, and deliveries will be maintained.
- Residents should expect disruptions of water service for house connections to new pipes and when main connections are completed. Residents will be notified for expected shutoffs.
- Check with SEPTA for any possible detours: www.septa.org

Reason for Project

PWD Project #50338 will include the following improvements:

- **New Green Stormwater Infrastructure Systems (GSI)** to capture stormwater, protect local waterways, and prevent combined sewer overflows
- **New Water Mains** to increase drinking water service reliability and reduce emergency breaks
- **Possible Lead Service Line Replacement:** Homes with confirmed lead or galvanized steel service lines are eligible for free replacements
- **New Sewers** to increase wastewater service reliability by reducing clogs and backups

(Page 1; turn over)

Contact our Construction Outreach inbox at Water.Projects@phila.gov with questions. Call the PWD hotline at (215) 685-6300 for any emergencies.

For information on **lead and customer responsibilities**, visit water.phila.gov/lead

Sign up for PWD's Construction Newsletter and project alerts with your ZIP code: water.phila.gov/project-news

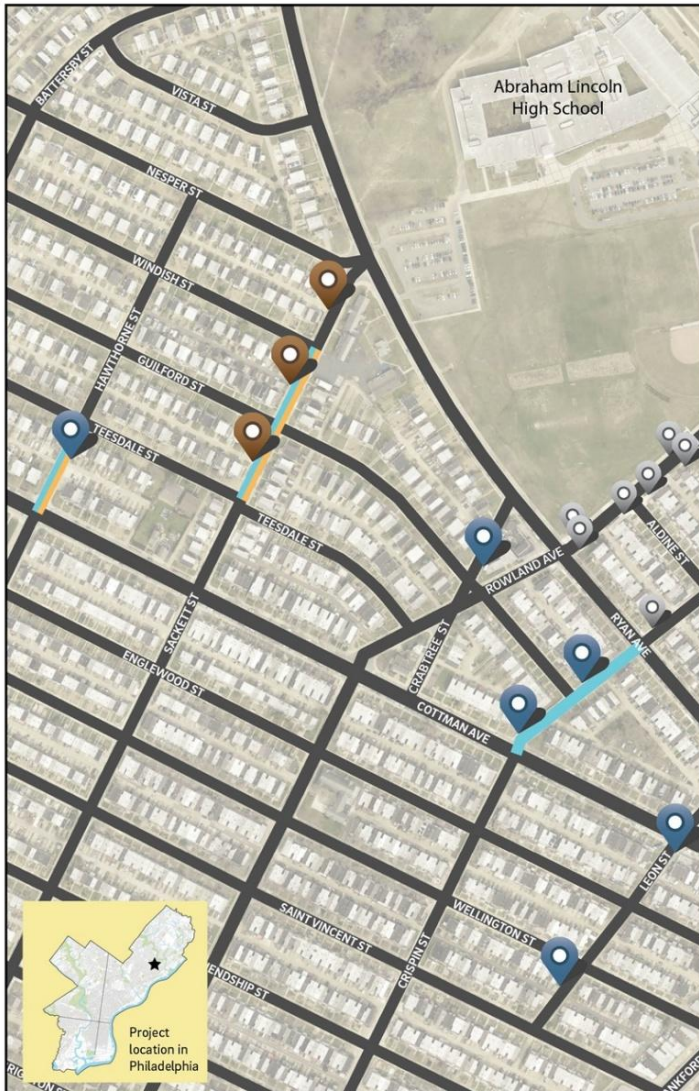
Philadelphia Water Department

1101 Market St., 6th Floor
Philadelphia, PA 19107

North Cottman Green Streets
Planned PWD Infrastructure Projects



Project Number: 50338
Project Page: water.phila.gov/projects/p50338
Map Updated: August 2025



Planned Green Stormwater Infrastructure (GSI) Improvements



Tree Trench



Subsurface Trench

Completed PWD GSI Project

Planned Infrastructure Improvements

New Water Main

New Sewer

This work will improve water and sewer services, and help protect waterways by reducing combined sewer overflows. Concept(s) subject to change.

For more information reach out to water.construction@phila.gov or Jackie.Ng@phila.gov, or visit water.phila.gov/green-city.