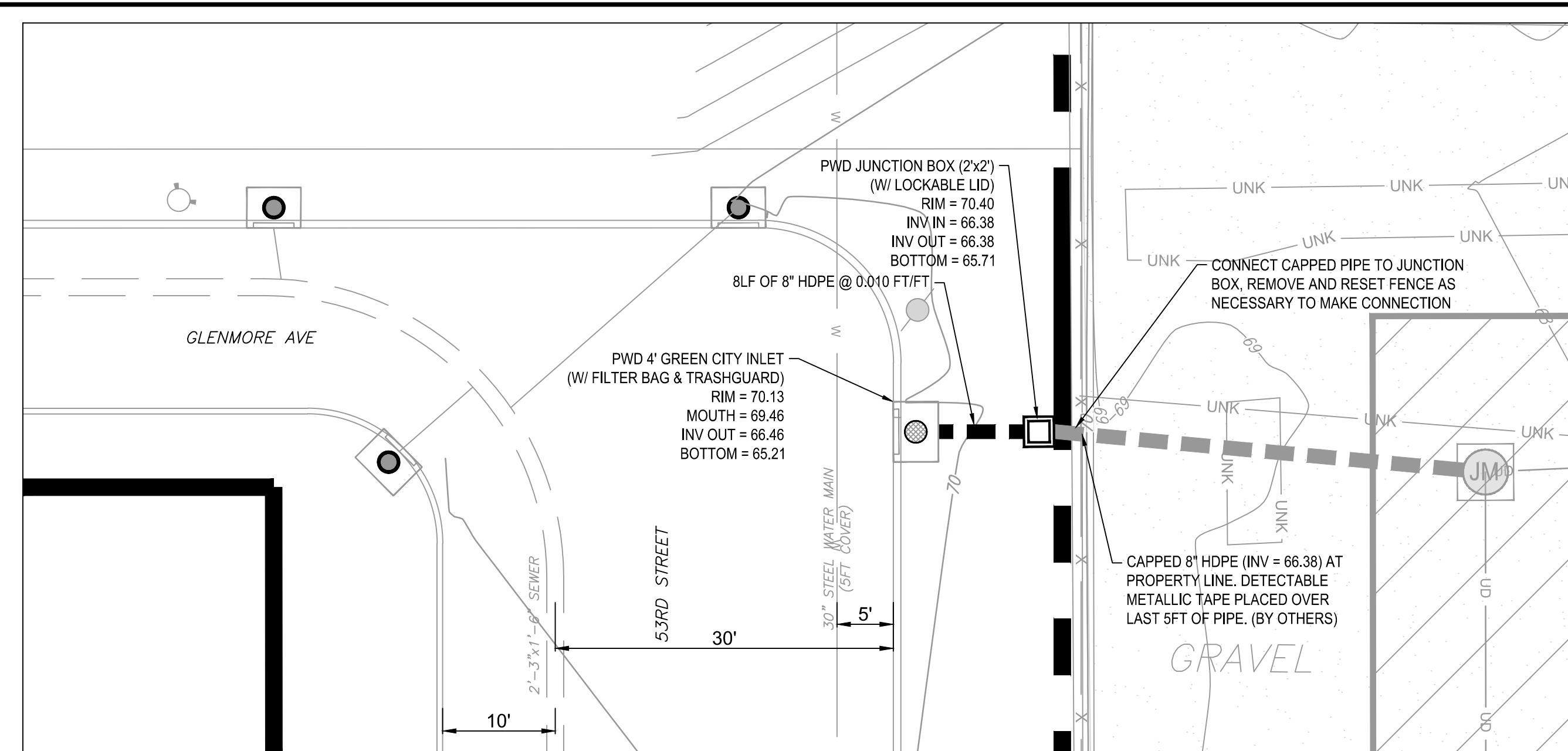


NOTE: THE CONTRACTOR IS ADVISED TO EXERCISE CAUTION DURING CONSTRUCTION ADJACENT TO THE 30" WATER MAIN. A PWD INSPECTOR MUST BE PRESENT DURING THE CONSTRUCTION IN THE VICINITY OF THE EXISTING TRANSMISSION WATER MAIN. CONTRACTOR SHALL NOT STOCKPILE ANY MATERIAL ABOVE THE TRANSMISSION WATER MAIN DURING CONSTRUCTION OR OPERATE OR STORE HEAVY EQUIPMENT ABOVE THE MAIN, AND SHALL ENSURE THAT THERE IS NO REDUCTION OF COVER OVER THE MAIN OTHER THAN WHAT IS SHOWN ON THE PLANS. CONTRACTOR TO EXCAVATE BY MANUAL MEANS WITHIN 4' OF THE 30" WATER MAIN.



53RD STREET GREEN INLET

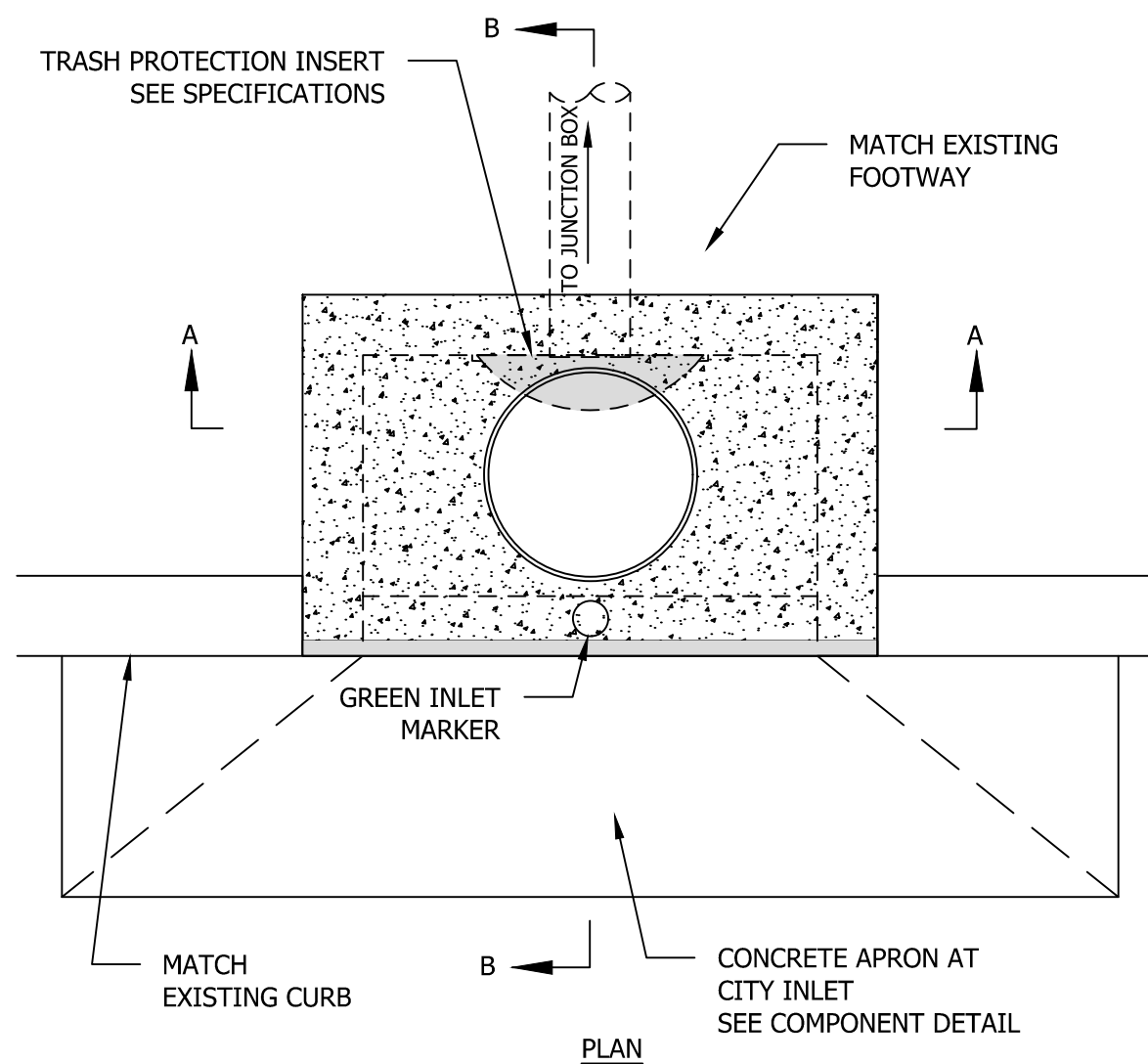
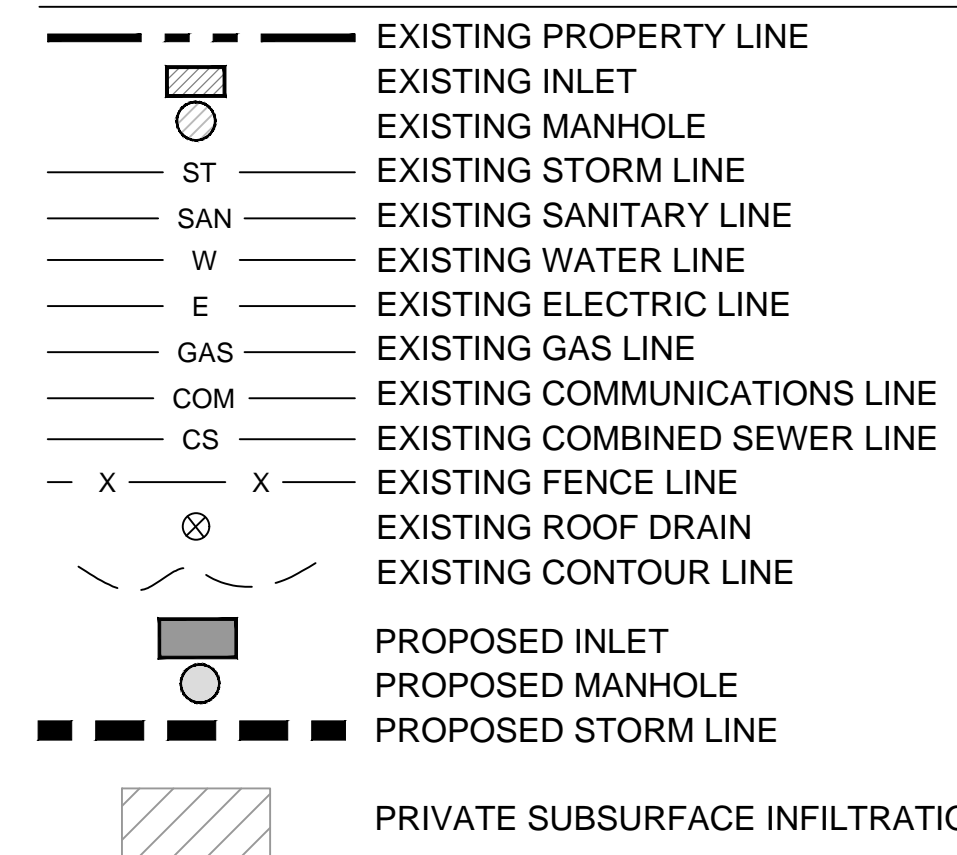
STANDARD NOTES:

1. THE APPROVED WORK TIES INTO A PRIVATE STORMWATER MANAGEMENT SYSTEM LOCATED AT 5213 GRAYS AVE. PLEASE REFER TO PROJECT TRACKING # FY18-GRAY-4905-01 FOR DETAILS OF PRIVATE SYSTEM.
2. THE CONTRACTOR MUST PROVIDE AS-BUILT RECORD DRAWINGS PER PWD GREEN STORMWATER INFRASTRUCTURE AS-BUILT SURVEY & DRAFTING MANUAL REQUIREMENTS.
3. CONTACT THE STREETS DEPARTMENT AT LEAST TWO WEEKS PRIOR TO CONSTRUCTION FOR THE ROADWAY OPENING PERMIT, PAVING & TRENCH RESTORATION PROCEDURES, AND LANE CLOSURE PERMIT. CHECK THE DEPARTMENT'S WEBSITE FOR DETAILS AND CONTACT INFORMATION: [HTTP://WWW.PHILADELPHIESTREETS.COM/CUSTOMER-SERVICE/DOWNLOADS-AND-LINKS/](http://www.philadelphiestreets.com/customer-service/downloads-and-links/)
4. CONTRACTOR MUST OBTAIN PERMISSION FROM THE STREETS DEPARTMENT TO STORE ANY MATERIALS ON THE STREET.
5. THE APPROVED WORK SHALL BE DONE IN THE PRESENCE OF A PWD INSPECTOR.
6. THE CONTRACTOR PERFORMING THIS WORK IS TO NOTIFY THE PWD CONSTRUCTION DIVISION, 1101 MARKET STREET, 2ND FLOOR, PHONE (215) 685-6345, AT LEAST 7 DAYS IN ADVANCE FOR ASSIGNMENT OF AN INSPECTOR OF THE JOB.
7. THE CONTRACTOR IS RESPONSIBLE FOR OBTAINING ALL ADDITIONAL PERMITS AND APPROVALS FROM ALL AFFECTED CITY AGENCIES AND UTILITIES.
8. ANY CHANGE TO, OR DEVIATION FROM, THE FINAL APPROVED DESIGN PLANS DURING CONSTRUCTION MUST BE APPROVED BY THE ASSIGNED PWD CONSTRUCTION ENGINEER AND BY THE PWD PROJECT ENGINEER.
9. PLACE AND COMPACT BACKFILL IN ACCORDANCE WITH THE STANDARD SPECIFICATIONS FOR EXCAVATION, REFILLING, GRADING, AND REPAVING.
10. ALL SIDEWALK AND CURBING TO BE REPLACED IN KIND ALONG FULL LIMITS OF CONSTRUCTION TO NEXT EXISTING JOINT OR AS DIRECTED BY PWD.
11. MAINTAIN AND PROTECT EXISTING INLETS. SHOULD THE EXISTING INLETS BE IN ANY WAY DAMAGED DURING CONSTRUCTION, THESE SHOULD BE REPAIRED TO THE SATISFACTION OF THE PWD INSPECTOR OR REPLACED PER PWD STANDARDS.
12. CONTRACTOR MUST COMPLY WITH EROSION AND SEDIMENT (E&S) CONTROL REQUIREMENTS DURING CONSTRUCTION. SEE PWD REGULATION 501.3 AND 600.4, PHILA. CODE S. 13-603, AND 25 PA CODE CHAPTER 102. THE CITY MAY REQUIRE THE CONTRACTOR TO CLEAN CITY-OWNED INLETS AND SYSTEMS AFFECTED BY NON-COMPLIANT OR FAILED E&S MEASURES.

GENERAL NOTES:

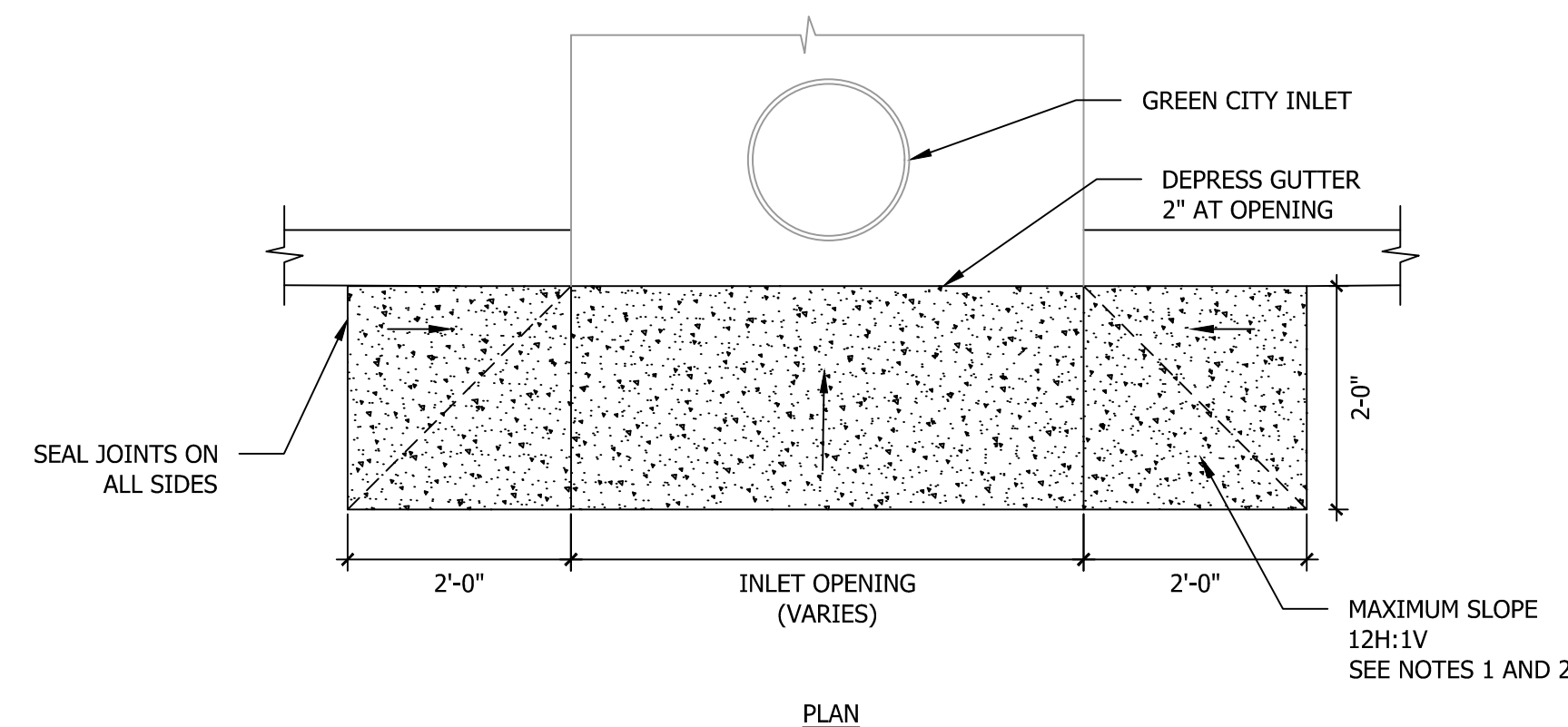
1. PROPERTY LINE SHOWN IS TAKEN FROM DEED OF PROPERTY, AND CITY PLAN NO. 246.
2. SITE HORIZONTAL DATUM IS PENNSYLVANIA SOUTH STATE PLANE COORDINATES NAD 83, AND VERTICAL DATUM IS NAVD 88.
3. EXISTING TOPOGRAPHIC SURVEY PERFORMED BY H2 INFRASTRUCTURE, LLC DURING OCTOBER 2016.
4. ADDITIONAL EXISTING TOPOGRAPHIC SURVEY AND UTILITY INFORMATION PERFORMED BY H2O INFRASTRUCTURE, LLC OCTOBER, 2016.
5. PA ONE CALL REPORT #20173400225

LEGEND:

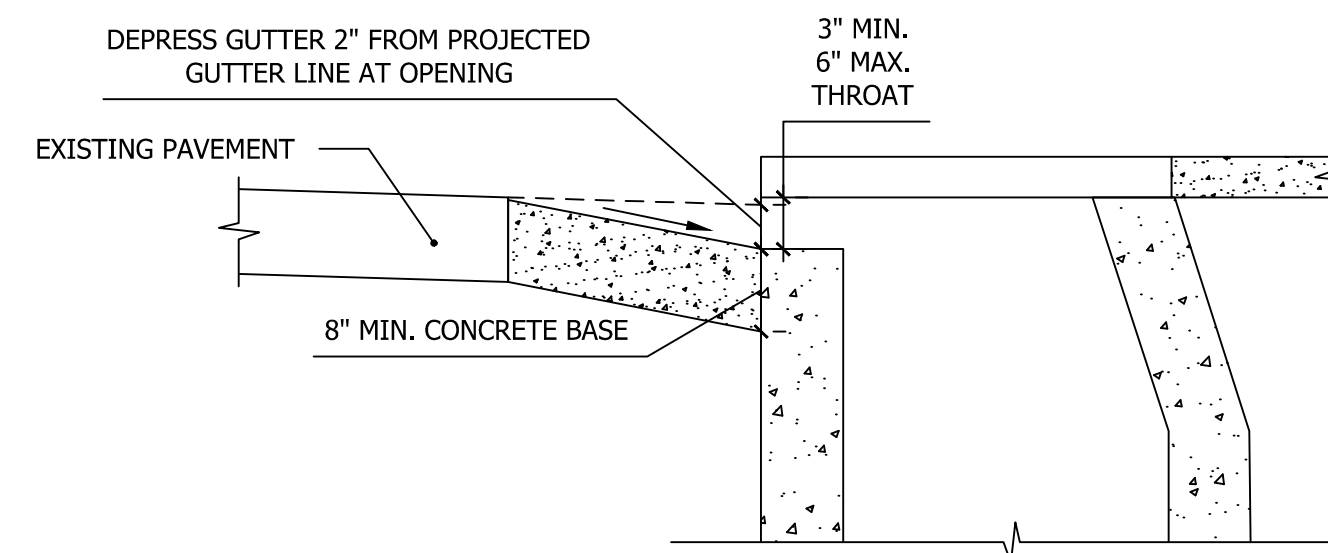


NOTES:

1. LOCATE PIPE OPENINGS TO PROVIDE MIN. 4" OF CONCRETE BETWEEN TOP OF INLET BOX AND TOP OF PIPE OPENING (PENNDOT RC-46M).
2. MODIFIED PWD CITY INLET TOP SLAB. OUTER DIMENSIONS REDUCED TO MATCH PENNDOT BOX.
3. FOOTWAY AND CARTWAY RESTORATION HAS BEEN DRAWN FOR REFERENCE PURPOSES ONLY. PAVEMENT RESTORATION QUANTITIES AND DESIGN MUST CONFORM TO CURRENT PHILADELPHIA STREETS DEPARTMENT STANDARDS FOR CITY STREETS AND PENNDOT STANDARDS FOR STATE ROUTES.
4. MIN. COVER FOR THERMOPLASTIC PIPE IN ROW IS 2'.
5. PLUMBERS PLUG TO MAINTAIN WATERTIGHT SEAL UNTIL CONSTRUCTION IS COMPLETE. PLUG TO BE REMOVED AT DIRECTION OF PWD. PLUG NOT TO EXTEND MORE THAN 2" OUT FROM INLET WALL.



PLAN

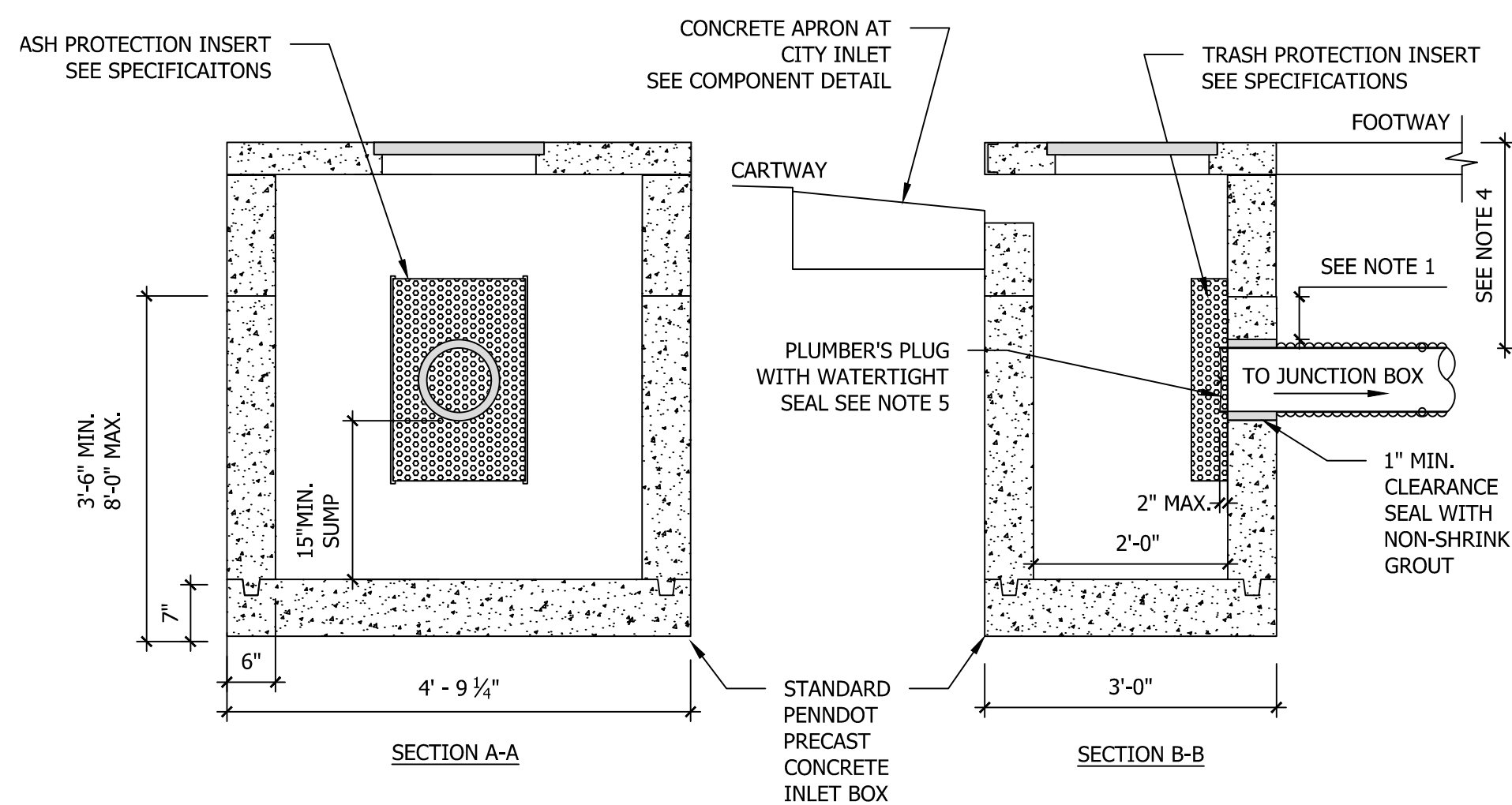


SECTION

NOTES:

1. MAXIMUM SLOPE OF APRON PARALLEL TO CURB IS 12H:1V (8.5%).
2. MAXIMUM SLOPE OF APRON PERPENDICULAR TO CURB IS 12H:1V (8.5%).
3. CONCRETE APRON THICKNESS (8") TO MATCH BOTTOM OF EXISTING CONCRETE BASE COURSE.
4. CONCRETE BASE COURSE MINIMUM THICKNESS IS 8" ON CITY STREETS AND 10" ON STATE ROUTES.
5. CONCRETE APRONS SHOULD BE LOCATED SO AS NOT TO INTERFERE WITH PLANNED OR POTENTIAL FUTURE ADA RAMP CONSTRUCTION.

C-5: CONCRETE APRON AT CITY INLET

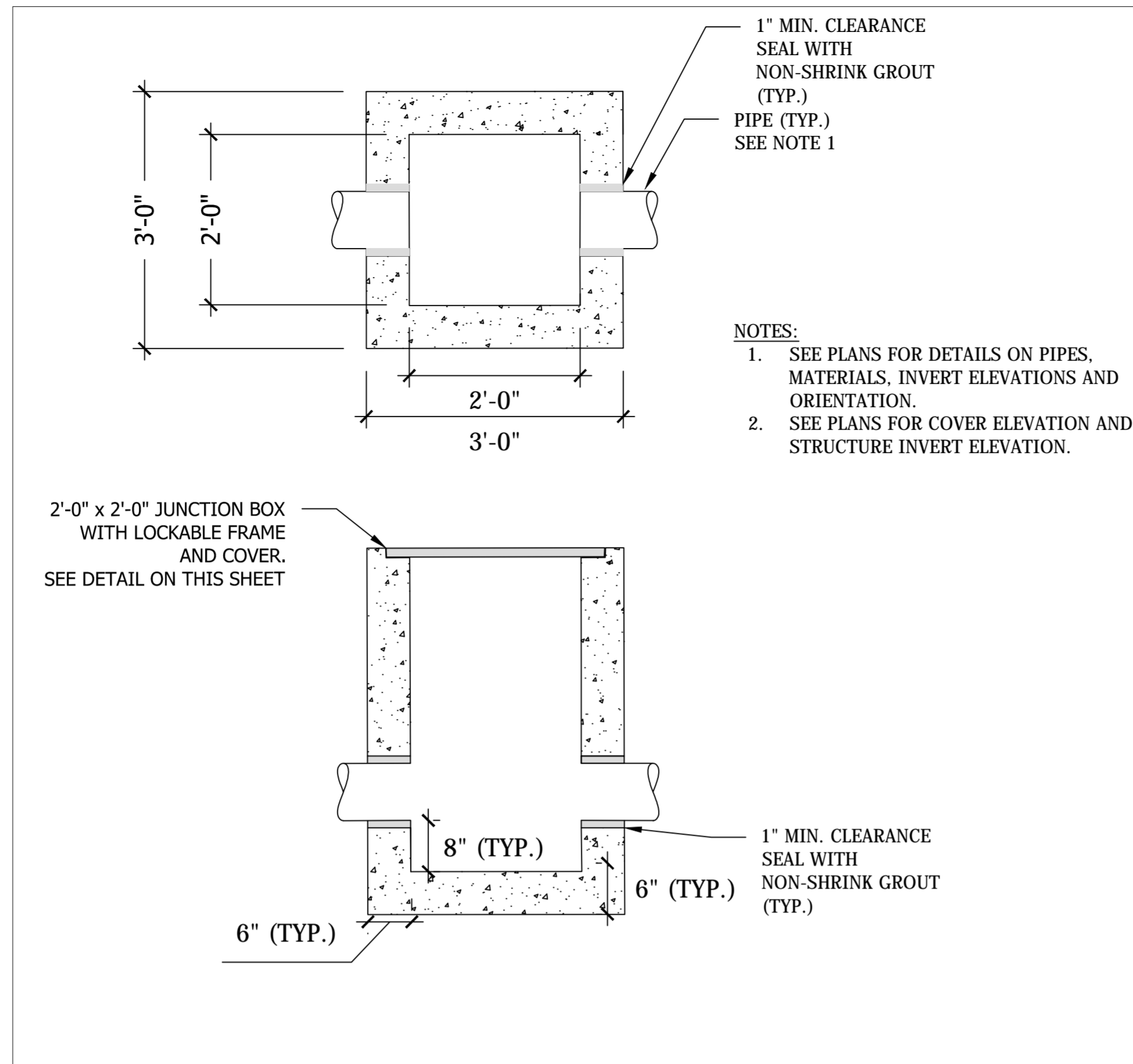


C-2: GREEN CITY INLET





GREEN INLET CURB MARKER DETAIL



8208APT 8308ZPT Assembly



Product Number
00820891W01
Design Features
-Materials
Cover
Gray Iron (CL35B)
Junction Box / Handhole Frame
Gray Iron (CL35B)

-Design Load
Heavy Duty
-Open Area
n/a
-Coating
Dipped
- / Designates Machined Surface

Certification
- ASTM A48
- Country of Origin: USA

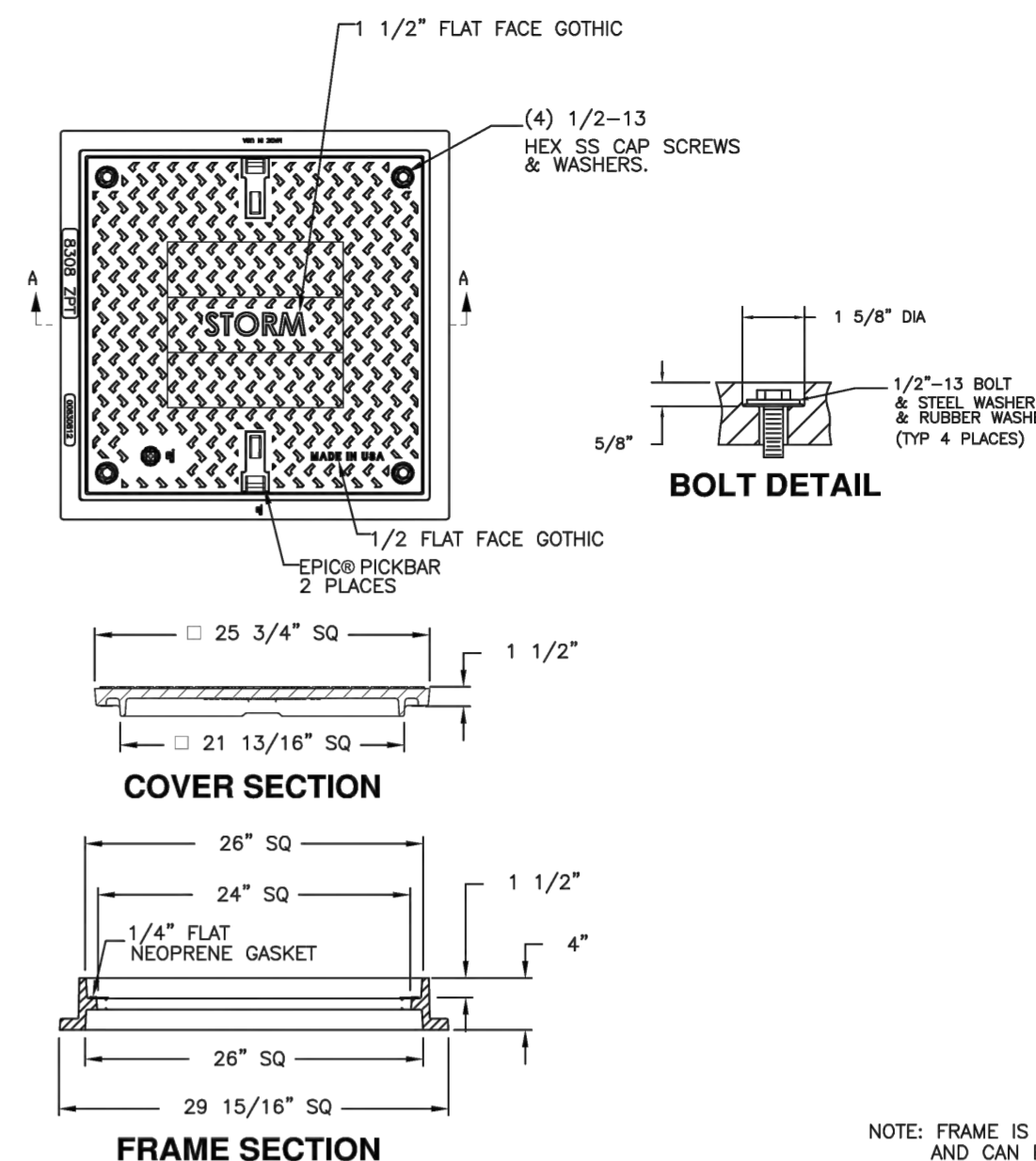
Major Components
00820891
00830812

Drawing Revision
08/20/2011 Designer: JLU
09/12/2014 Revised By: MAH

Disclaimer
Weights (Bx, Ag) dimensions (inches/mm) and drawings provided for your guidance. We reserve the right to modify specifications without prior notice.

CONFIDENTIAL: This drawing is the property of EJ GROUP, Inc. and embodies confidential information, registered marks, patents, trade secret information, and/or know how that is the property of EJ GROUP, Inc. All rights reserved.

Contact
800 626 4653
ejco.com



NOTE: FRAME IS REVERSIBLE AND CAN BE INSTALLED AS A BOTTOM FLANGE UNIT.

