



## MISSION STATEMENT

*The mission of the Industrial Waste Unit (IWU) is to protect the City's freshwater resources and wastewater treatment plants by enforcing local, state and federal regulations governing wastewater discharges to the City's wastewater and stormwater collection systems.*

**JULY 2017  
VOLUME 16**

### Inside This Issue:

### What's Inside?

- ◆ Environmental Protection Agency's (EPA's) final rule that will require facilities to install dental amalgam separators in order to minimize mercury discharges to our treatment plants
- ◆ Congratulations to the recipients of our Pretreatment Awards for 100% Compliance! Recognized on pages 3 and 4 of this issue, awards are given based on the number of years that the industrial user is in compliance:
  - ◆ PLATINUM (10+ years)
    - ◆ GOLD (5-9 years)
    - ◆ SILVER (3-4 years)
    - ◆ BRONZE (1-2 years)

EPA's Dental Amalgam Separator Rule	2
Pretreatment Awards for 100% Compliance	3-4
Pretreatment Puzzle	5
IWU Contact Information	5

## REMINDER



**Semi-Annual Compliance Reports are Due NO LATER THAN July 31, 2017.**

Submitting your Semi-Annual Compliance Report more than 30-days late is considered Significant Non-Compliance.

Failure to submit your Semi-Annual Compliance Report will result in Significant-Non Compliance!



# EPA's Dental Amalgam Separator Rule

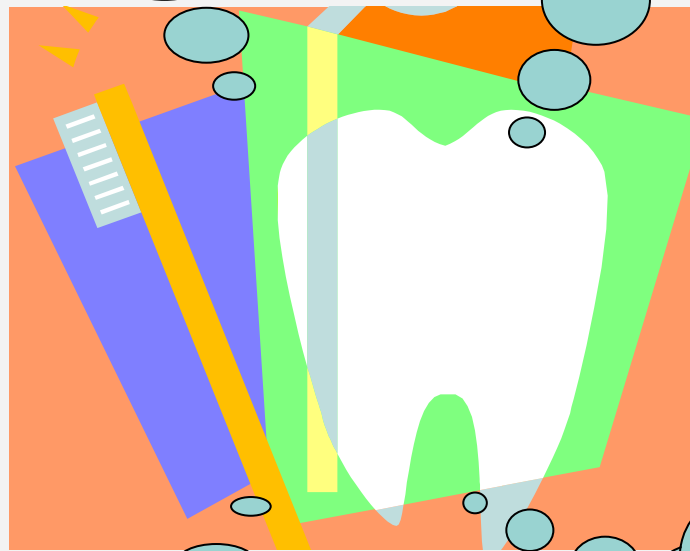


## WHAT IS THE NEW RULE ABOUT?

EPA finalized technology-based pretreatment standards for discharges of pollutants into publicly owned treatment works (POTWs) from certain existing and new dental practices. The proposal would require such dentists to comply with requirements for controlling the discharge of dental amalgam pollutants into POTWs. The effective date of the rule was July 14, 2017.

## WHY IS IT BEING CONSIDERED?

Dental offices are one of the largest sources of mercury discharges to POTWs. Mercury from amalgam is very detrimental to the environment as it travels through various ecosystems. The installation of dental amalgam separators will result in a significant decrease of mercury discharges.



## FOR MORE INFORMATION

<https://www.epa.gov/eg/dental-effluent-guidelines>

## WHO DOES IT AFFECT

The new rule will require all publicly owned treatment works (POTWs) in the U.S. to ensure the compliance of dental offices in their service areas.

## Pretreatment Awards 100% Compliance

This issue brings the annual awarding of the Industrial Waste Unit's Pretreatment Certificates for 100% Compliance. These certificates are awarded annually to permittees who have had no violations of their wastewater discharge permit in the previous year. The certificate program recognizes consecutive years of compliance through the award of bronze (1-2 years), silver (3-4 years), gold (5-9 years), and platinum (10+ years) certificates.



### 2017 Gold Award Recipients

- ◆ Bethayres Reclamation Corp.
- ◆ Caledonian Dye Works, Inc.
- ◆ Cardone Industries, Inc.
- ◆ Clean Rental Services, Inc.
- ◆ Columbia Silk Dyeing Co., Inc.
- ◆ CSX Transportation, Inc.
- ◆ CW Industries
- ◆ Evoqua Water Technologies, LLC
- ◆ Fleetwash, Incorporated
- ◆ Garfield Refining Company
- ◆ GE Betz, Inc.
- ◆ Gill Powder Coating
- ◆ Hillock Anodizing, Inc.
- ◆ J.P. Cerini Technologies, Inc.
- ◆ Johnson & Johnson Consumer Inc.
- ◆ Kinder-Morgan Liquid Terminals
- ◆ Martin/F. Weber
- ◆ Metlab/Potero
- ◆ N. Jonas & Co., Inc.
- ◆ National Chemical Laboratories, Incorporated
- ◆ Newman & Company, Inc.
- ◆ Northeast Donut Shops Management Corp.
- ◆ PECO Energy, Oregon Ave. Shop
- ◆ Penn Fishing Tackle Manufacturing Company
- ◆ Philadelphia Energy Solutions Refining and Marketing LLC
- ◆ Philadelphia Gas Works
- ◆ Philadelphia Rust-Proof Company, Inc.
- ◆ PolySat, Inc.
- ◆ Regal International Leathers, Ltd
- ◆ Simons Brothers
- ◆ Starlite Industries, Inc.
- ◆ Sun Chemical Corp.
- ◆ Thermacore, Inc.
- ◆ United Chemical Technologies Specialties, Inc.
- ◆ United Parcel Service
- ◆ Veolia Energy Philadelphia
- ◆ Wade Technology, Inc.
- ◆ Wayne Mills Corp.
- ◆ WuXi AppTec Incorporated

## 2017 Silver Award Recipients

- ◆ Abbey Color Incorporated
- ◆ Amuneal Manufacturing Corp.
- ◆ Coca-Cola Refreshments USA, Incorporated
- ◆ Dietz & Watson, Inc.
- ◆ John T. Bennett Company
- ◆ Leatex Chemical Company
- ◆ LSG Sky Chefs
- ◆ Medical Products Laboratories
- ◆ Medical Products Laboratories
- ◆ MedImmune LLC
- ◆ Michel's Bakery, Inc.
- ◆ Model Finishing Co., Inc.
- ◆ Mrs. Ressler's Food Products
- ◆ Murray Greene & Sons
- ◆ Peacock Laboratories
- ◆ Tasty Baking Co.
- ◆ United Color Manufacturing

## 2017 Bronze Award Recipients

- ◆ Advance Technologies
- ◆ AgustaWestland Philadelphia Corporation
- ◆ Amuneal Manufacturing Corp
- ◆ Ashland Chemical Company
- ◆ Atlantic City Linen Supply, LLC
- ◆ Barnell, Inc.
- ◆ Cintas Corporation
- ◆ Computer Components Corp.
- ◆ Coren Metal Inc.
- ◆ David Michael & Co., Inc.
- ◆ DELAVAU, LLC
- ◆ Department of the Treasury, U.S. Mint
- ◆ DGM Custom Polishing & Finishing Corporation
- ◆ Domestic Uniform Rental
- ◆ Frankford Plating Inc.
- ◆ Frontida BioPharm
- ◆ Hillock Anodizing, Inc.
- ◆ HP HOOD
- ◆ II-IV Optical Systems
- ◆ Inolex Chemical Company
- ◆ Integrated Deicing Services
- ◆ James Abbott, Inc.
- ◆ JAWS, Inc.
- ◆ Lannett Company, Inc.
- ◆ Lannett Company, Inc.
- ◆ Mid Atlantic Circuits
- ◆ Naval Foundry & Propeller Center
- ◆ Neatsfoot Oil Corporation
- ◆ NEL Metal Restorations
- ◆ PBF Logistics Products Terminals, LLC
- ◆ Pepsi Beverages Company
- ◆ Philadelphia Cheesesteak Co..
- ◆ Premier Medical (MFG)
- ◆ Stockwell Elastomerics, Inc.
- ◆ Vibroplating, Inc.
- ◆ WuXi AppTec Incorporated



**JOB WELL DONE!!!**

## PWD Pretreatment Puzzle

P I A N G E C L E A N W A T E R A C T J I Y S  
 R U N D B Y P A S S R W R E T A W E T S A W C  
 E I U D I T R O P E R Y L R E T R A U Q U T D  
 T V I J U S U R C H A R G E O R E Q P Y N L E  
 A P N C C S C L O G D Q Z C O E G L R R N O N  
 W A T O T A T H P N S A X S V M Y A E N E C W  
 M S E M N N R R A E Y L I O E E T C T O F A O  
 R S R P A I O E I R R L U Y R D I I R I F L Y  
 O T F L T T T C R A G M B G F I C R E T L L L  
 T H E I U A I N B Q L E I M L A I O A C U I C  
 S R R A L R N A I Z J U N T O T X G T E E M I  
 T O E N L Y O N A S G P S F W I O E M P N I L  
 L U N C O U M I S A M P L E N O T T E S T T B  
 X G C E P Y C D H A U L E R R N F A N N X S U  
 N H E R H W G R E A S E T R A P U C T I I U P  
 O U P S E T Q O O W O L F K C A B S E W E R S

Find the following words in the puzzle. Words are hidden ↑ ↓ ⇌ ⇐ ⇓

BACKFLOW	HAULER	PASSTHROUGH	SANITARY
BYPASS	INDUSTRIAL USER	PERMIT	SEWER
REMEDICATION	COMPLIANCE	POLLUTANT	SLUG
CLEAN WATER ACT	INTERFERENCE	PASS THROUGH	STORMWATER
GREASE TRAP	PRETREATMENT	PUBLICLY OWNED	SURCHARGE
DISCHARGE	MONITOR	QUARTERLY REPORT	TOXICITY
EFFLUENT	ORDINANCE	CATEGORICAL	UPSET
INSPECTION	OVERFLOW	SAMPLE	WASTEWATER

Puzzle Created Using [www.superteacherworksheets.com](http://www.superteacherworksheets.com)

### Industrial Waste Unit Contact Information

Questions, comments and suggestions for future topics are always welcome.

For comments on draft permits contact us at:

Industrial Waste Unit  
 1101 Market Street, 6th Floor  
 Philadelphia, PA 19107

Phone: 215-685-6236  
 Fax: 215-685-6232



For questions about your permit:

Baxter Water Treatment Plant  
 9001 State Road  
 Philadelphia, PA 19136

Lonnie Goldiner: 215-685-8034  
 Walter Milton: 215-685-8095  
 Kim Veres: 215-685-8096  
 Fax: 215-685-8008

Visit the Industrial Waste Unit Online at: [www.phila.gov/water/IWU.html](http://www.phila.gov/water/IWU.html)