

SAMPLE PLANS



<u>a</u> – Sample Water Drawing	{11} {23} {28} {33} {38}
<u>b</u> – Sample Combined Sewer Drawing (S-1)	{43} {44} {59} {70} {74}
<u>c</u> – Sample Sewer Match Line Drawing (S-3)	
<u>d</u> – Sample Separate Sewer Drawing	
<u>e</u> – Sample Roadway Grading Drawing	

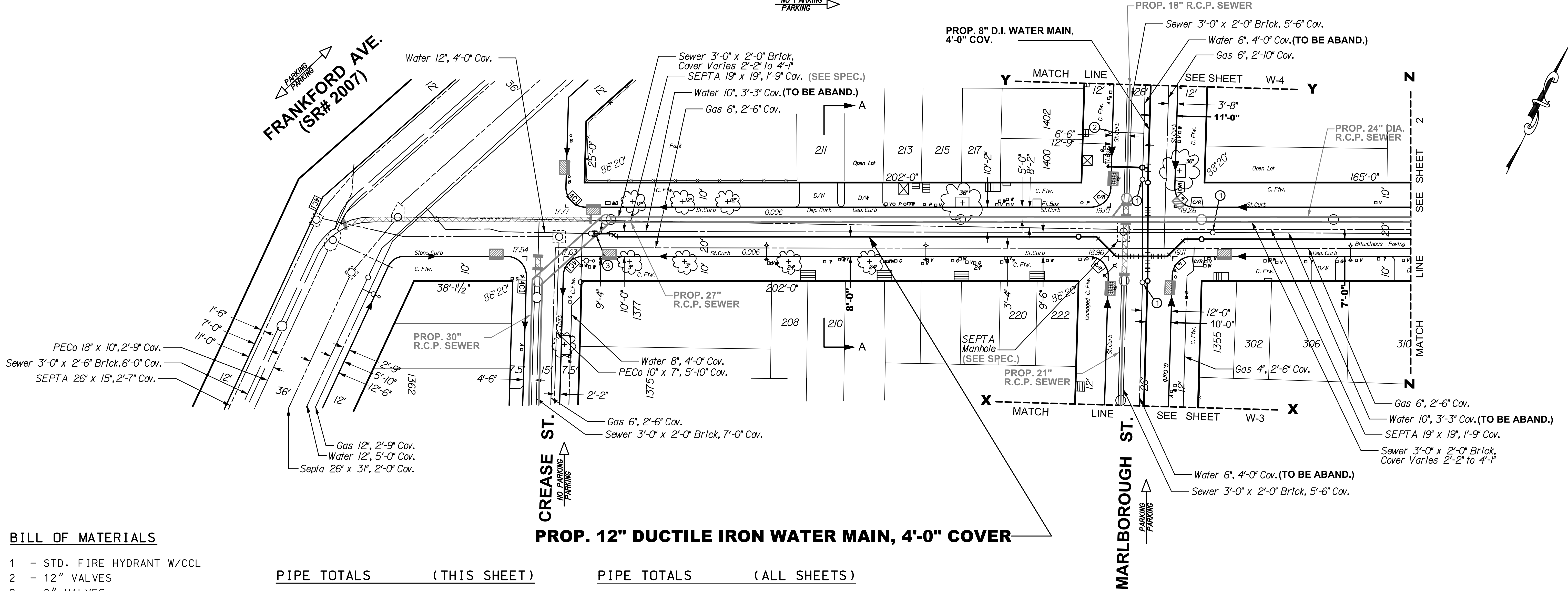
Plan Revisions Not Shown On Sample Plans

1. Property Lines will be a new dash dot style.
2. The confirmed curb is as shown on the City Plan. When the confirmed curb and physical curb or edge of paving are in the same location it will be defined as the Curbline. If the confirmed curb and physical curb or edge of paving are not in the same location, the confirmed curb will be a dashed line with a lesser weight (and called out) and the physical curb or edge of paving will be a solid line with a lesser weight line (and called out).
3. Appendix Ilk (Manholes, Inlets and Appurtenances) will be changed to add a number (4 or 6 indicating 4' or 6' respectively) over the symbol for existing Open Mouth Grate Inlets and Highway Grate Inlets.
4. Delete "and angles" from Sections 2 D.1.a) (page 2-2) and 3 D.1.a) (page 3-2). It would then read: "Houseline distance, street and Right-of-way widths, name of street and legislative route number if it is a state highway (see Appendix Vi [52] for a list of state highway route numbers).
5. Base Plans will be changed to have redundant utility **dimensions** at both ends of the block when there is no change in dimension if the block distance is over 250 feet.
6. Base Plans will be changed to have redundant utility **call-outs** at both ends of the block if the block distance is over 250 feet.
7. Diagonal lines (typically along the houseline) to indicate a building exists will not be accepted.
8. On a larger sewer a manhole should be shown in the center of the sewer (unless it is an offset manhole) instead of being to one side of the sewer where it is found in the field and/or shown on the return plan.
9. Civil or Mechanical dimensioning shall be accepted on cross sections.
10. Match Lines on sewer sheets should include a grayed-out intersection in the plan view where applicable (when the profile extends into the intersection). The profile would not be grayed-out. No call outs are required in the intersection but any other numbers or letters should be oriented correctly.
11. GPIS numbers shall be included in the title block as shown in Appendix Ilc & d.
12. Total number of sheets text in the title block shall be removed.

BELGRADE STREET

NO PARKING
PARKING

FRANKFORD AVE.
(SR# 2007)



BILL OF MATERIALS

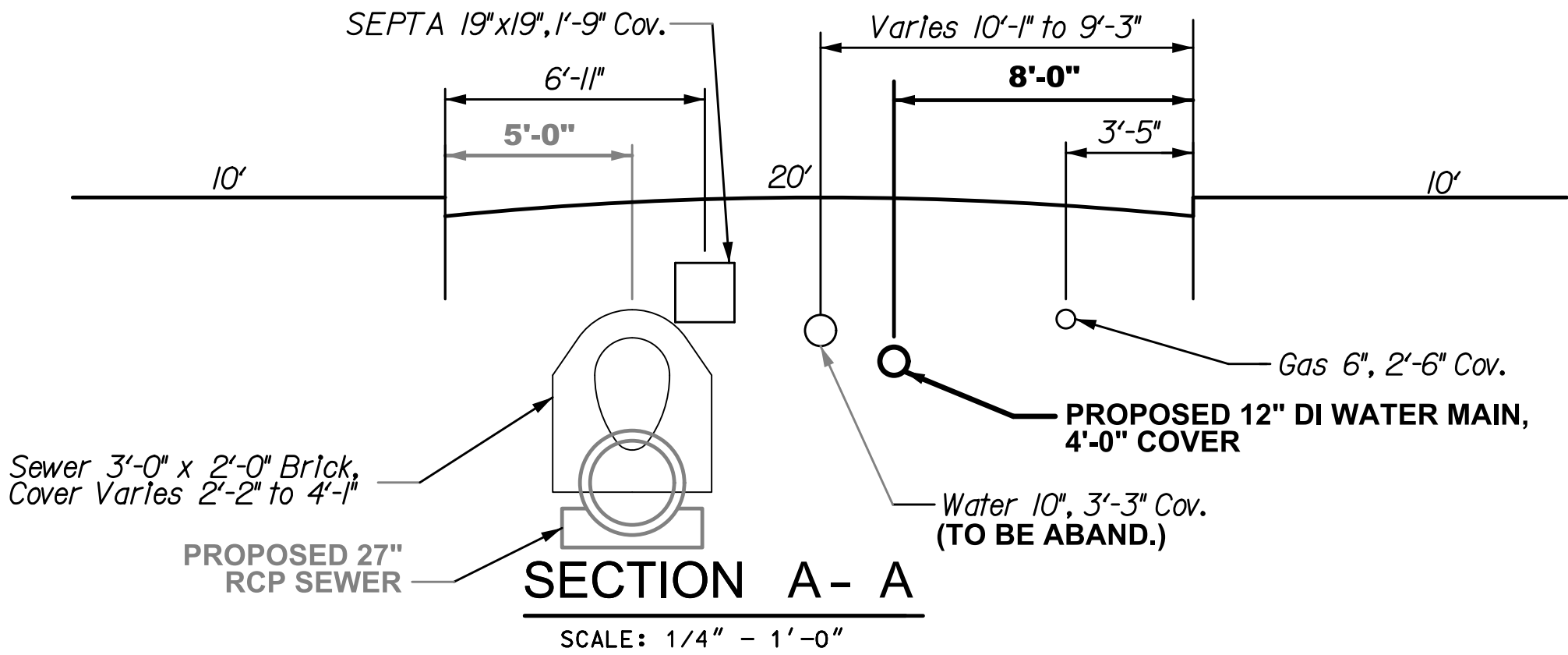
- 1 - STD. FIRE HYDRANT W/CCL
- 2 - 12" VALVES
- 2 - 8" VALVES
- 1 - 6" VALVE
- 1 - 12"x8" CROSS
- 1 - 8"x6" HYDRANT ANCHOR TEE
- 10 - 12" - 1/8 BENDS (4 VERT.)
- 4 - 8" - 1/8 BENDS (4 VERT.)
- 1 - 12" SLEEVE

PIPE TOTALS		(THIS SHEET)
340'	+/-	12" DUCTILE IRON WATER MAIN
130'	+/-	8" DUCTILE IRON WATER MAIN
20'	+/-	6" DUCTILE IRON WATER MAIN

PIPE TOTALS		(ALL SHEETS)
815'	+/-	12" DUCTILE IRON WATER MAIN
5'	+/-	10" DUCTILE IRON WATER MAIN
875'	+/-	8" DUCTILE IRON WATER MAIN
55'	+/-	6" DUCTILE IRON WATER MAIN

- NOTES:
- ① REMOVE FRAME & COVER - SEE SPEC'S.
 - ② REMOVE FIRE HYDRANT - SEE SPEC'S.
 - ③ REMOVE PIPE AND/OR FITTING & RECONNECT.
 - ④ ROTATE FITTINGS AS REQUIRED.

- GENERAL NOTES:
- EXISTING WATER MAINS SHALL BE CUT & PLUGGED AS APPROVED BY THE CITY ENGINEER.
 - THE CONTRACTOR SHALL MAINTAIN A MINIMUM 6-INCH CLEARANCE BETWEEN ALL UNDERGROUND STRUCTURES AND THE NEW WATER MAINS.
 - BILLS OF MATERIAL AND PIPE TOTALS ARE FOR THE CONVENIENCE OF THE CONTRACTOR ONLY AND PAYMENT WILL BE MADE ONLY FOR THE ACTUAL AMOUNT OF PIPE AND APPURTENANCES INSTALLED.
 - FIRE HYDRANTS SHALL NOT BE CONSTRUCTED OR RELOCATED UNTIL SUCH LOCATIONS HAVE BEEN APPROVED BY THE WATER DEPARTMENT CONSTRUCTION DIVISION IN THE FIELD.
 - ALL DISTANCES SHOWN ARE IN DISTRICT STANDARD MEASUREMENT.



NOTICE:
PURSUANT TO THE REQUIREMENTS OF PENNSYLVANIA ACT 287 OF 1974 (THE UNDERGROUND UTILITY LINE PROTECTION ACT), AS AMENDED BY PA ACT 199 OF 2004, THE CONTRACTOR SHALL CONTACT THE PENNSYLVANIA ONE CALL SYSTEM AT 1-800-242-1776, AT LEAST 3 DAYS PRIOR TO EXCAVATION.

HIGHWAY DISTRICT NO. 3 WARD NO. 18
SURVEY DISTRICT NO. 5 WATER PLATE NO. 39
ONE CALL SERIAL NO. 1036047

WATER MAIN RELAY PROJECT

BELGRADE STREET
FROM
CREASE ST. TO MARLBOROUGH ST.

APPROVED _____
CHIEF, DESIGN BRANCH, ENGINEERING DIVISION
APPROVED _____
GENERAL MANAGER, PLANNING AND ENGINEERING
APPROVED _____
WATER COMMISSIONER

CITY OF PHILADELPHIA
WATER DEPARTMENT

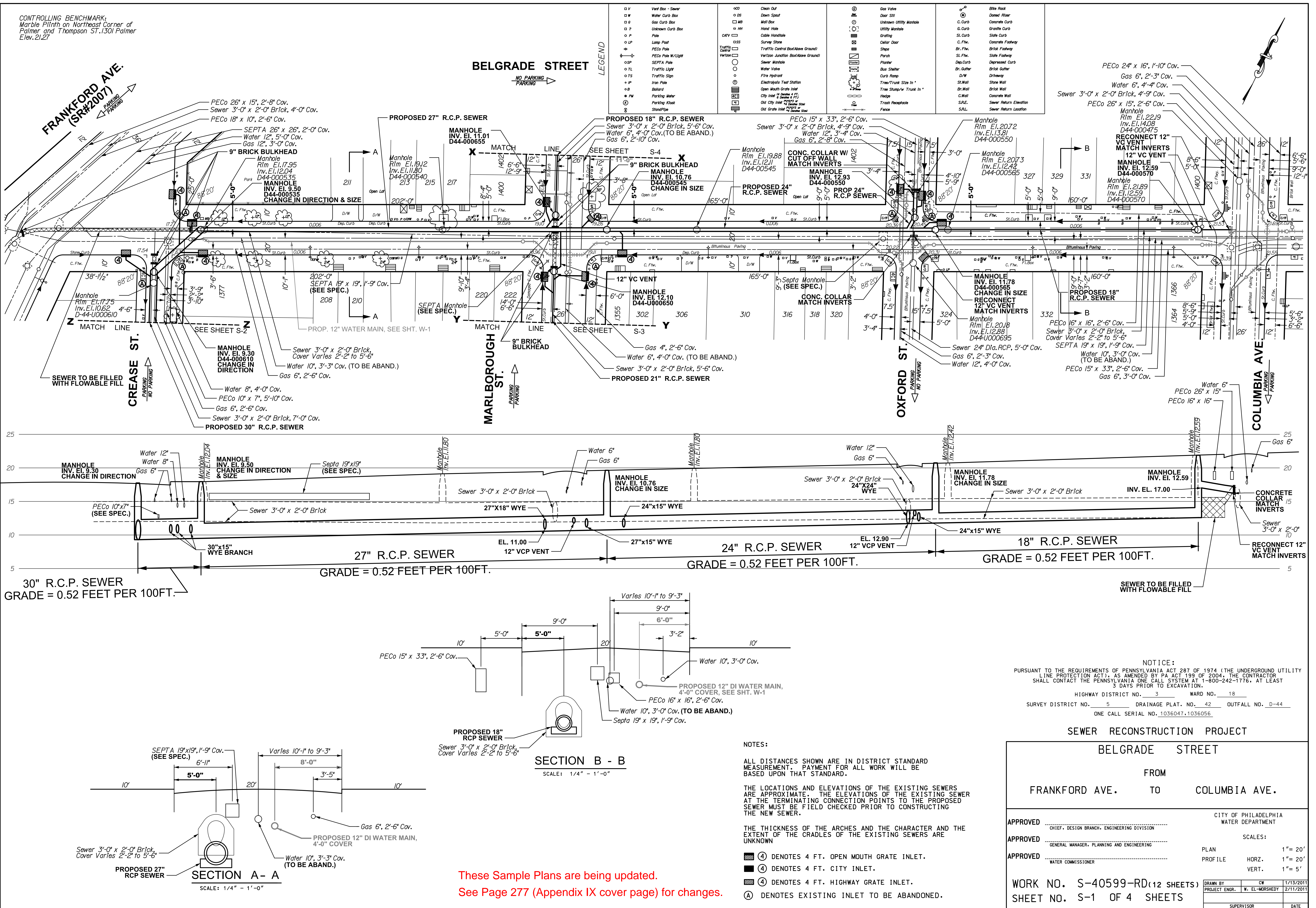
SCALES:
PLAN 1" = 20'
AND AS NOTED

WORK NO. S-40599-RD (12 SHEETS)
SHEET NO. W-1 OF 8 SHEETS

DRAWN BY	CW	1/13/2014
PROJECT ENGR.	W. EL-MORSHEDY	2/11/2014
SUPERVISOR		DATE

These Sample Plans are being updated.
See Page 277 (Appendix IX cover page) for changes.

CONTROLLING BENCHMARK:
Marble Plinth on Northeast Corner of
Palmer and Thompson ST. 1301 Palmer
Elev. 21.27



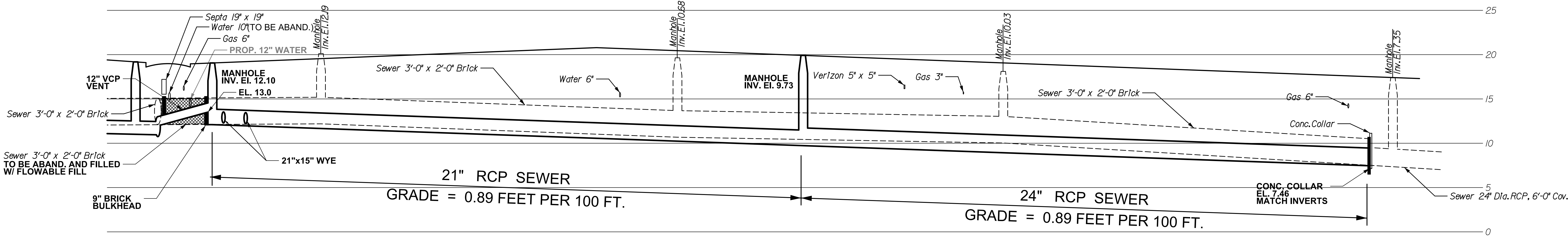
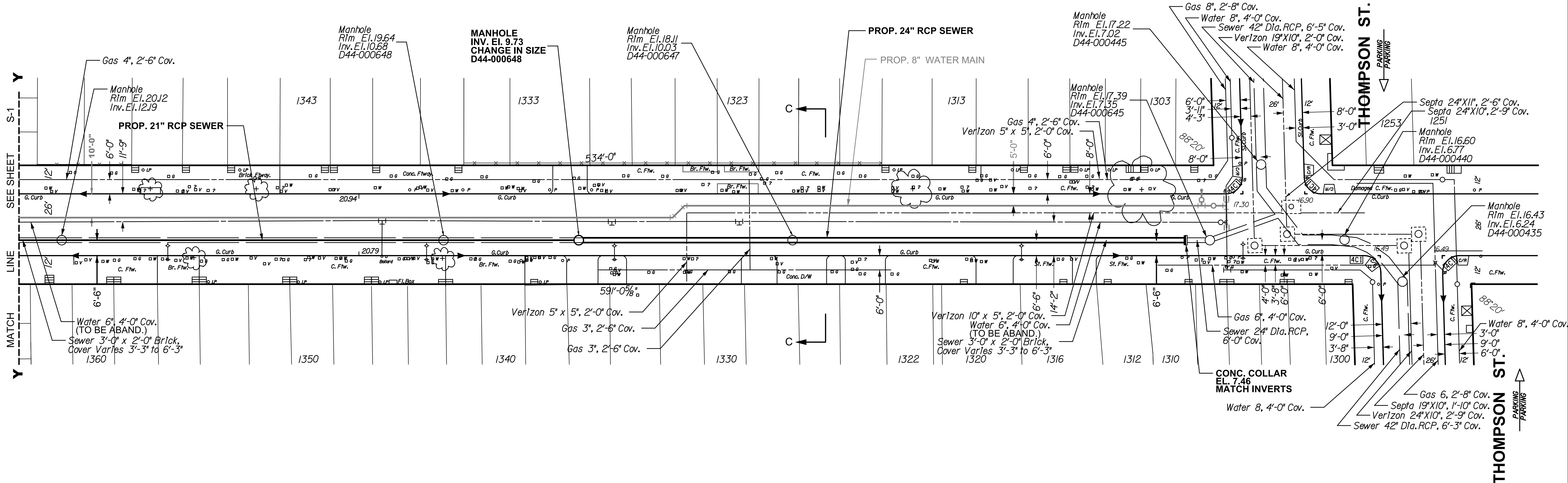
CONTROLLING BENCHMARK:
Marble Plinth on Northeast Corner of
Palmer and Thompson St. 1301 Palmer
Elev. 21.27

MARLBOROUGH STREET



LEGEND

□ V	Vent Box - Sewer	□ CO	Clean Out	⊙	Gas Valve	⊙	Blitz Rock
□ W	Water Curb Box	□ DS	Down Spout	⊙	Door Still	⊙	Diesel Motor
□ S	Gas Curb Box	□ MB	Manhole Box	⊙	Unknown Utility Manhole	⊙	Concrete Curb
□ ?	Unknown Curb Box	□ HH	Hand Hole	⊙	Grating	⊙	Grass Curb
□ P	Pole	□ CH	Cable Handhole	⊙	Grating	⊙	Grass Curb
□ LP	Lamp Post	□ SS	Survey Station	⊙	Grating	⊙	Grass Curb
□ P	PECO Pole	□ T	Traffic Control (Box Above Ground)	⊙	Grating	⊙	Grass Curb
□ SP	SEPTA Pole	□ V	Verizon Junction (Box Above Ground)	⊙	Grating	⊙	Grass Curb
□ TL	Traffic Light	□ W	Water Valve	⊙	Grating	⊙	Grass Curb
□ TS	Traffic Sign	□ W	Water Valve	⊙	Grating	⊙	Grass Curb
□ P	Pole	□ W	Water Valve	⊙	Grating	⊙	Grass Curb
□ B	Ballast	□ W	Water Valve	⊙	Grating	⊙	Grass Curb
□ PM	Parking Meter	□ W	Water Valve	⊙	Grating	⊙	Grass Curb
□	Stand Pipe	□ W	Water Valve	⊙	Grating	⊙	Grass Curb



NOTICE:
PURSUANT TO THE REQUIREMENTS OF PENNSYLVANIA ACT 287 OF 1974 (THE UNDERGROUND UTILITY
LINE PROTECTION ACT), AS AMENDED BY PA ACT 199 OF 2004, THE CONTRACTOR
SHALL CONTACT THE PENNSYLVANIA ONE CALL SYSTEM AT 1-800-242-1776, AT LEAST
3 DAYS PRIOR TO EXCAVATION.
HIGHWAY DISTRICT NO. 3 WARD NO. 18
SURVEY DISTRICT NO. 5 DRAINAGE PLAT. NO. 42 OUTFALL NO. D-44
ONE CALL SERIAL NO. 1036072

NOTES:

ALL DISTANCES SHOWN ARE IN DISTRICT STANDARD
MEASUREMENT. PAYMENT FOR ALL WORK WILL BE
BASED UPON THAT STANDARD.
THE LOCATIONS AND ELEVATIONS OF THE EXISTING SEWERS
ARE APPROXIMATE. THE ELEVATIONS OF THE EXISTING SEWER
AT THE TERMINATING CONNECTION POINTS TO THE PROPOSED
SEWER MUST BE FIELD CHECKED PRIOR TO CONSTRUCTING
THE NEW SEWER.

THE THICKNESS OF THE ARCHES AND THE CHARACTER AND THE
EXTENT OF THE CRADLES OF THE EXISTING SEWERS ARE
UNKNOWN

SEWER RECONSTRUCTION PROJECT

MARLBOROUGH STREET

FROM
BELGRADE ST. TO THOMPSON ST.

APPROVED	CITY OF PHILADELPHIA WATER DEPARTMENT
CHIEF, DESIGN BRANCH, ENGINEERING DIVISION	
PLAN	1" = 20'
PROFILE	HORZ. 1" = 20'
	VERT. 1" = 5'
WORK NO. S-40599-RD (12 SHEETS)	DRAWN BY CW 1/13/2014
SHEET NO. S-3 OF 4 SHEETS	PROJECT ENGR. W. EL-MORSHEDY 2/1/2014
	SUPERVISOR
	DATE

CONTROLLING BENCHMARK:
Survey Monument Found at N.W.C. of
Kelvin Street & Regina Street Elevation = 182.69

LEGION STREET

PARKING

WALDEMIRE DR.

LEGEND

○ V	Vent Box - Sewer
□ W	Water Curb Box
□ G	Gas Curb Box
□ U	Unknown Curb Box
○ P	Pole
○ LP	Lamp Post
⊕	PECo Pole
⊕	PECo Pole W/ Light
○ SP	SEPTA Pole
○ TL	Traffic Light
○ TS	Traffic Sign
⊕ IP	Iron Pole
⊕ B	Ballast
⊕ PW	Parking Meter
⊕	Parking Kiosk
⊕	Stand Pipe
⊕	Clean Out
⊕ DS	Down Spout
⊕ MB	Mail Box
⊕ HH	Hand Hole
⊕	Cable Handhole
⊕ SS	Survey Stake
⊕	Traffic Control Box (Above Ground)
⊕	Verizon Junction Box (Above Ground)
○	Water Valve
○	Fire Hydrant
○	Electrolysis Test Station
⊕	Open Mouth Grate Inlet
⊕	City Inlet - 4" Diameter & 1' L
⊕	Old City Inlet - 2" Diameter & 1' L
⊕	Old City Inlet - 2" Diameter & 1' L
⊕	Old City Inlet - 2" Diameter & 1' L
⊕	Gas Valve
⊕	Door Sill
⊕	Unknown Utility Manhole
⊕	Utility Manhole
⊕	Grating
⊕	Cellar Door
⊕	Steps
⊕	Parade
⊕	Planter
⊕	Bus Shelter
⊕	Curb Ramp
⊕	Tree Trunk Size In *
⊕	Tree Stump w/ Trunk In *
⊕	Hedge
⊕	Trash Receptacle
⊕	Fence
⊕	Blue Rack
⊕	Dressed Pile
⊕	Concrete Curb
⊕	Granite Curb
⊕	Slate Curb
⊕	Concrete Footway
⊕	Brick Footway
⊕	Sl. Fw.
⊕	Sl. Fw.
⊕	Dep. Curb
⊕	Brick Gutter
⊕	Driveway
⊕	Stone Wall
⊕	Brick Wall
⊕	Concrete Wall
⊕	S.E.
⊕	S.E.

PROPOSED 10" VCP W/18" RCP SW CONDUIT
(VARIABLE "C" DISTANCE)

PROPOSED 10" VCP W/24" RCP SW CONDUIT

PROPOSED 10" VCP W/18" RCP SW CONDUIT
(VARIABLE "C" DISTANCE)

Sewer 10" VCP, W/21" R.C.P. SW Cond., 8'-0" Cov.

SW MANHOLE INV. EL. 73.32 Q110-II-0160

CHANGE OF GRADE

CONC. COLLAR EL. 70.46 MATCH INVERTS

SW MANHOLE INV. EL. 75.70 Q110-II-0165

CHANGE OF SIZE AND GRADE

CONC. COLLAR EL. 76.23 MATCH INVERTS

SW Manhole Rlm. EL. 88.00 Inv. EL. 76.33 Q110-II-0170

San. Manhole Rlm. EL. 87.00 Inv. EL. 74.38 Q110-II-S0220

CONC. COLLAR EL. 74.38 MATCH INVERTS

SW Manhole Rlm. EL. 84.08 Inv. EL. 73.32 Q110-II-0160

CONC. COLLAR EL. 70.46 MATCH INVERTS

SW Manhole Rlm. EL. 83.61 Inv. EL. 72.31 Q110-II-S0240

San. Manhole Rlm. EL. 83.00 Inv. EL. 70.46 Q110-II-S0035

CONC. COLLAR EL. 70.46 MATCH INVERTS

SW Manhole Rlm. EL. 84.52 Inv. EL. 74.00 Q110-II-M0255

Summit Manhole Rlm. EL. 84.52 Inv. EL. 74.00 Q110-II-M0255

San. Manhole Rlm. EL. 85.49 Inv. EL. 73.69 Q110-II-S0250

CONC. COLLAR EL. 70.46 MATCH INVERTS

SW Manhole Rlm. EL. 84.52 Inv. EL. 74.00 Q110-II-M0255

CONC. COLLAR EL. 70.46 MATCH INVERTS

SW Manhole Rlm. EL. 84.52 Inv. EL. 74.00 Q110-II-M0255

CONC. COLLAR EL. 70.46 MATCH INVERTS

SW Manhole Rlm. EL. 84.52 Inv. EL. 74.00 Q110-II-M0255

CONC. COLLAR EL. 70.46 MATCH INVERTS

SW Manhole Rlm. EL. 84.52 Inv. EL. 74.00 Q110-II-M0255

CONC. COLLAR EL. 70.46 MATCH INVERTS

SW Manhole Rlm. EL. 84.52 Inv. EL. 74.00 Q110-II-M0255

CONC. COLLAR EL. 70.46 MATCH INVERTS

SW Manhole Rlm. EL. 84.52 Inv. EL. 74.00 Q110-II-M0255

CONC. COLLAR EL. 70.46 MATCH INVERTS

SW Manhole Rlm. EL. 84.52 Inv. EL. 74.00 Q110-II-M0255

CONC. COLLAR EL. 70.46 MATCH INVERTS

SW Manhole Rlm. EL. 84.52 Inv. EL. 74.00 Q110-II-M0255

CONC. COLLAR EL. 70.46 MATCH INVERTS

SW Manhole Rlm. EL. 84.52 Inv. EL. 74.00 Q110-II-M0255

CONC. COLLAR EL. 70.46 MATCH INVERTS

SW Manhole Rlm. EL. 84.52 Inv. EL. 74.00 Q110-II-M0255

CONC. COLLAR EL. 70.46 MATCH INVERTS

SW Manhole Rlm. EL. 84.52 Inv. EL. 74.00 Q110-II-M0255

CONC. COLLAR EL. 70.46 MATCH INVERTS

SW Manhole Rlm. EL. 84.52 Inv. EL. 74.00 Q110-II-M0255

CONC. COLLAR EL. 70.46 MATCH INVERTS

SECTION B - B

SCALE: 1/4" = 1'-0"

SECTION A - A

SCALE: 1/4" = 1'-0"

NOTICE:
PURSUANT TO THE REQUIREMENTS OF PENNSYLVANIA ACT 287 OF 1974 (THE UNDERGROUND UTILITY
LINE PROTECTION ACT), AS AMENDED BY PA ACT 199 OF 2004, THE CONTRACTOR
SHALL CONTACT THE PENNSYLVANIA ONE CALL SYSTEM AT 1-800-242-1776, AT LEAST
3 DAYS PRIOR TO EXCAVATION.
HIGHWAY DISTRICT NO. 6 WARD NO. 66
SURVEY DISTRICT NO. 4 DRAINAGE PLAT NO. 111 OUTFALL NO. Q-110-11
ONE CALL SERIAL NO. 20103021162

SEWER RECONSTRUCTION PROJECT

LEGION STREET

FROM

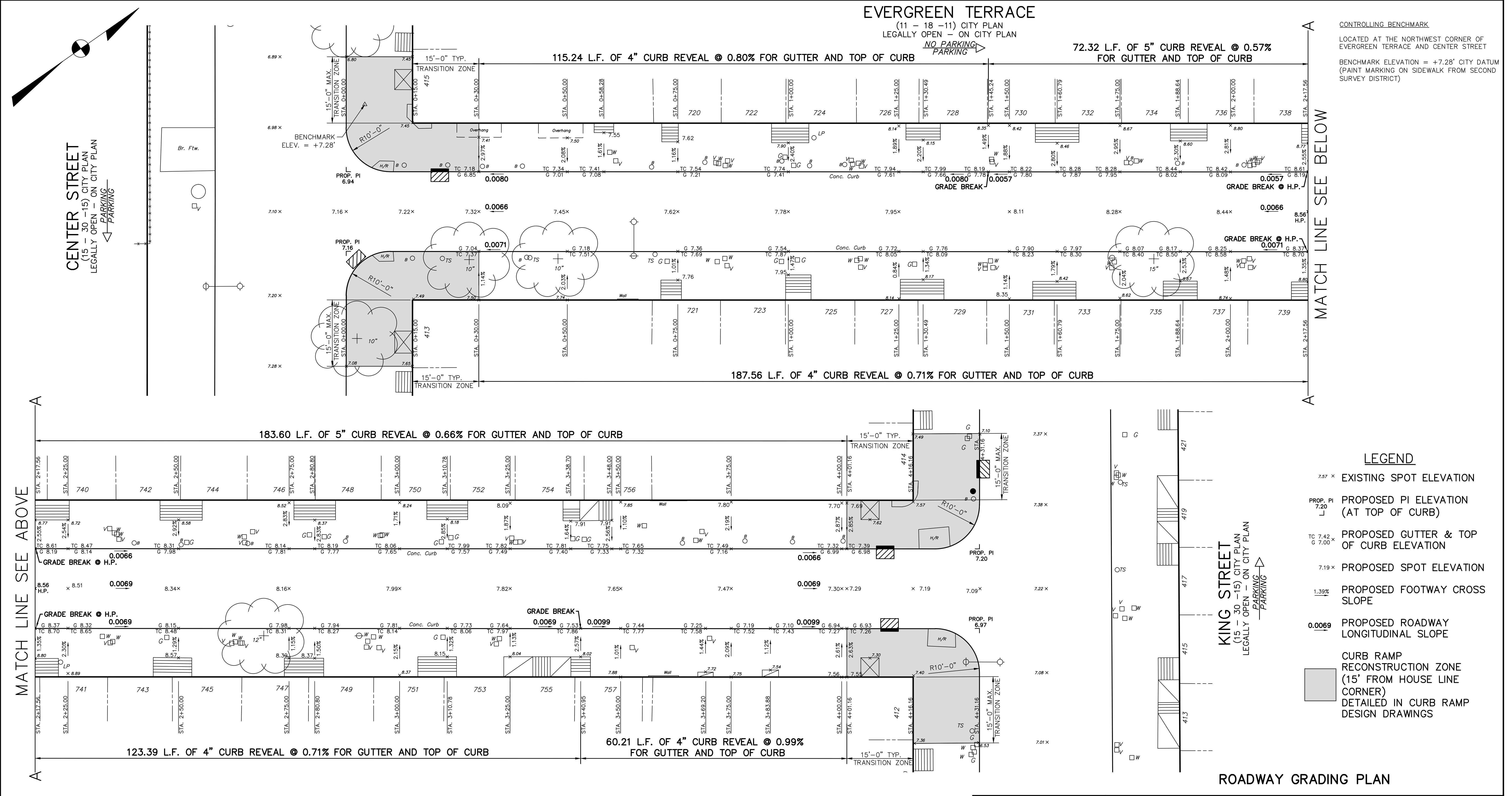
ABBY RD

TO

WALDEMIRE DR.

APPROVED	CITY OF PHILADELPHIA WATER DEPARTMENT
CHIEF, DESIGN BRANCH, ENGINEERING DIVISION	
PLAN	1" = 20'
PROFILE	HORZ. 1" = 20'
	VERT. 1" = 5'
WORK NO. S-40740-R	
SHEET NO. S-2 OF 3 SHEETS	
DRAWN BY TK	
PROJECT ENGR. S. VLAM	
SUPERVISOR	DATE

SAMPLE APPENDIX IXd Back to Appendix IX



CONTROLLING BENCHMARK
LOCATED AT THE NORTHWEST CORNER OF
EVERGREEN TERRACE AND CENTER STREET
BENCHMARK ELEVATION = +7.28' CITY DATUM
(PAINT MARKING ON SIDEWALK FROM SECOND
SURVEY DISTRICT)

MATCH LINE SEE BELOW

- LEGEND**
- 7.57 x EXISTING SPOT ELEVATION
 - PROP. PI 7.20 PROPOSED PI ELEVATION (AT TOP OF CURB)
 - TC 7.42, G 7.00 PROPOSED GUTTER & TOP OF CURB ELEVATION
 - 7.19 x PROPOSED SPOT ELEVATION
 - 1.39% PROPOSED FOOTWAY CROSS SLOPE
 - 0.0069 PROPOSED ROADWAY LONGITUDINAL SLOPE
 - CURB RAMP RECONSTRUCTION ZONE (15' FROM HOUSE LINE CORNER) DETAILED IN CURB RAMP DESIGN DRAWINGS

ROADWAY GRADING PLAN

EVERGREEN TERRACE
FROM
CENTER STREET TO KING STREET

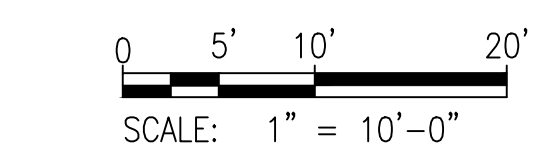
APPROVED
DISTRICT SURVEYOR, DEPARTMENT OF STREETS

CITY OF PHILADELPHIA
DEPARTMENT OF STREETS
SCALES:
PLAN 1" = 10'
AND AS NOTED

PWD WORK NO. S-31415-RDG
SHEET NO. R-1 OF 5 SHEETS

NOTICE:
PURSUANT TO THE REQUIREMENTS OF PENNSYLVANIA ACT 287 OF 1974 (THE UNDERGROUND UTILITY
LINE PROTECTION ACT), AS AMENDED BY PA ACT 199 OF 2004, THE CONTRACTOR SHALL CONTACT THE
PENNSYLVANIA ONE CALL SYSTEM AT 1-800-242-1776, AT LEAST 3 DAYS PRIOR TO EXCAVATION.

HIGHWAY DISTRICT No. 1 WARD No. 39
SURVEY DISTRICT No. 2 WATER PLATE No. 13 PA ONE CALL SERIAL No. 01123581321



ALL DIMENSIONS MUST BE VERIFIED BY CONTRACTOR AND OWNER
MUST BE NOTIFIED OF ANY DISCREPANCIES BEFORE PROCEEDING
WITH THE WORK.

SAMPLE

APPENDIX IXe

Back to Appendix IX

These Sample Plans are being updated.
See Page 277 (Appendix IX cover page) for changes.