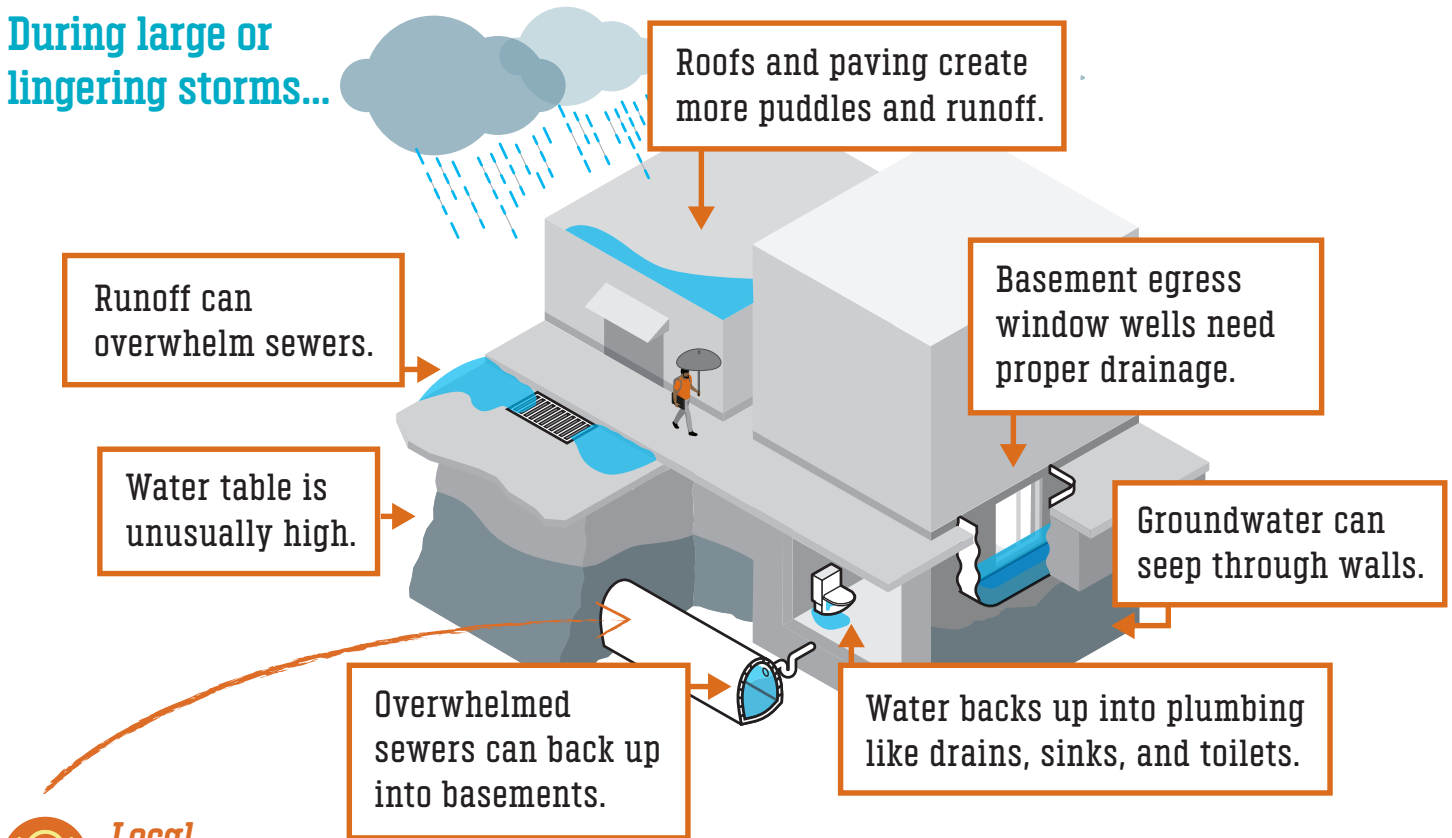


Why Germantown Floods

This flooding is caused by rain and storms. It's called **inland** flooding, or **urban** flash flooding. Water that isn't captured by sewers will flow onto streets and properties.

During large or lingering storms...



Local history matters:

Germantown was built over creeks. The Wingohocking Creek was turned into a sewer starting in 1879.

Safety

Sign up for alerts at: www.phila.gov/ready

You'll see "**flash flood**" warnings and watches for these events. A "watch" means it *could* happen. A "warning" means it's currently happening or is about to start.

This flooding can be dangerous. It occurs quickly, has fast moving water, and can look shallow when it may be feet deep.

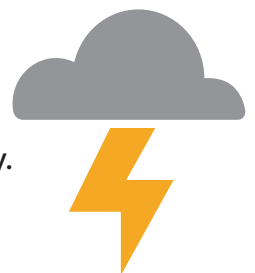
- **Never drive through flooded streets.**
- **Evacuate if necessary.**
- **Stay out! Avoid flooded areas and be cautious of damage to structures or utilities.**



Climate Change

A changing climate means more frequent and more severe storms.

Take flooding seriously. Protect yourself and your property.



Plan before flooding:



- 1 Get Flood Insurance.**
Flooding can happen in more areas than you might expect. See what's covered, costs and more at: www.floodsmart.gov
- 2 Sign up for emergency text alerts.**
Get texts from the city's Office of Emergency Management Sign up at: www.phila.gov/ready
- 3 Move valuable items off lower-level floors**
Boxes sitting on a low floor are vulnerable to damage.



After flooding happens:

First, stay safe. If you can safely access your circuit breaker, turn off the electricity to the affected area. Never stand in water unless you know the electricity is off!



Document the damage. Photos of damage while the water is visible can be helpful for insurance claims and damage assessments.



More information:

- Find out more about flooding, and how to prepare: phila.gov/flood-management

