

SAMPLE PLANS



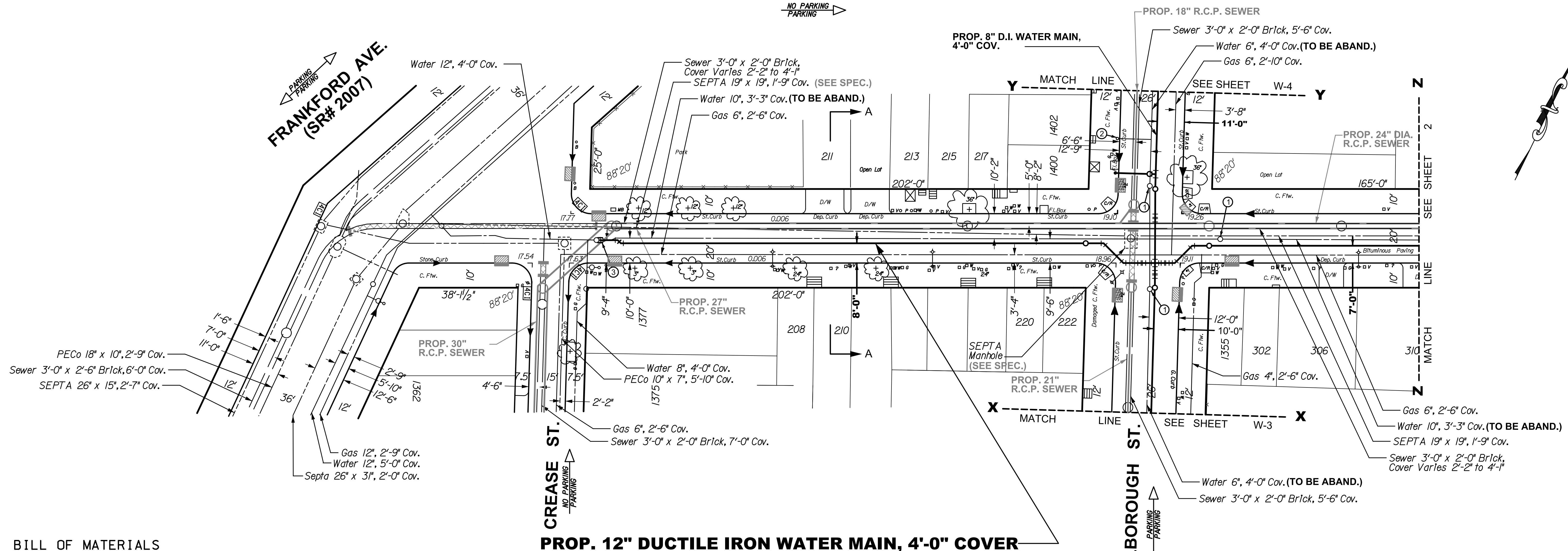
- [a](#) – Sample Water Drawing
- [b](#) – Sample Combined Sewer Drawing (S-1)
- [c](#) – Sample Sewer Match Line Drawing (S-3)
- [d](#) – Sample Separate Sewer Drawing
- [e](#) – Sample Roadway Grading Drawing

Plan Revisions Not Shown On Sample Plans

1. Property Lines will be a new dash dot style.
2. The confirmed curb is as shown on the City Plan. When the confirmed curb and physical curb or edge of paving are in the same location it will be defined as the Curbline. If the confirmed curb and physical curb or edge of paving are not in the same location, the confirmed curb will be a dashed line with a lesser weight (and called out) and the physical curb or edge of paving will be a solid line with a lesser weight line (and called out).
3. Appendix Ilk (Manholes, Inlets and Appurtenances) will be changed to add a number (4 or 6 indicating 4' or 6' respectively) over the symbol for existing Open Mouth Grate Inlets and Highway Grate Inlets.
4. Delete "and angles" from Sections 2 D.1.a) (page 2-2) and 3 D.1.a) (page 3-2). It would then read: "Houseline distance, street and Right-of-way widths, name of street and legislative route number if it is a state highway (see Appendix Vi [52] for a list of state highway route numbers).
5. Base Plans will be changed to have redundant utility **dimensions** at both ends of the block when there is no change in dimension if the block distance is over 250 feet.
6. Base Plans will be changed to have redundant utility **call-outs** at both ends of the block if the block distance is over 250 feet.
7. Diagonal lines (typically along the houseline) to indicate a building exists will not be accepted.
8. On a larger sewer a manhole should be shown in the center of the sewer (unless it is an offset manhole) instead of being to one side of the sewer where it is found in the field and/or shown on the return plan.
9. Civil or Mechanical dimensioning shall be accepted on cross sections.
10. Match Lines on sewer sheets should include a grayed-out intersection in the plan view where applicable (when the profile extends into the intersection). The profile would not be grayed-out. No call outs are required in the intersection but any other numbers or letters should be oriented correctly.
11. GPIS numbers shall be included in the title block as shown in Appendix Ilc & d.
12. Total number of sheets text in the title block shall be removed.

BELGRADE STREET

NO PARKING
PARKING



BILL OF MATERIALS

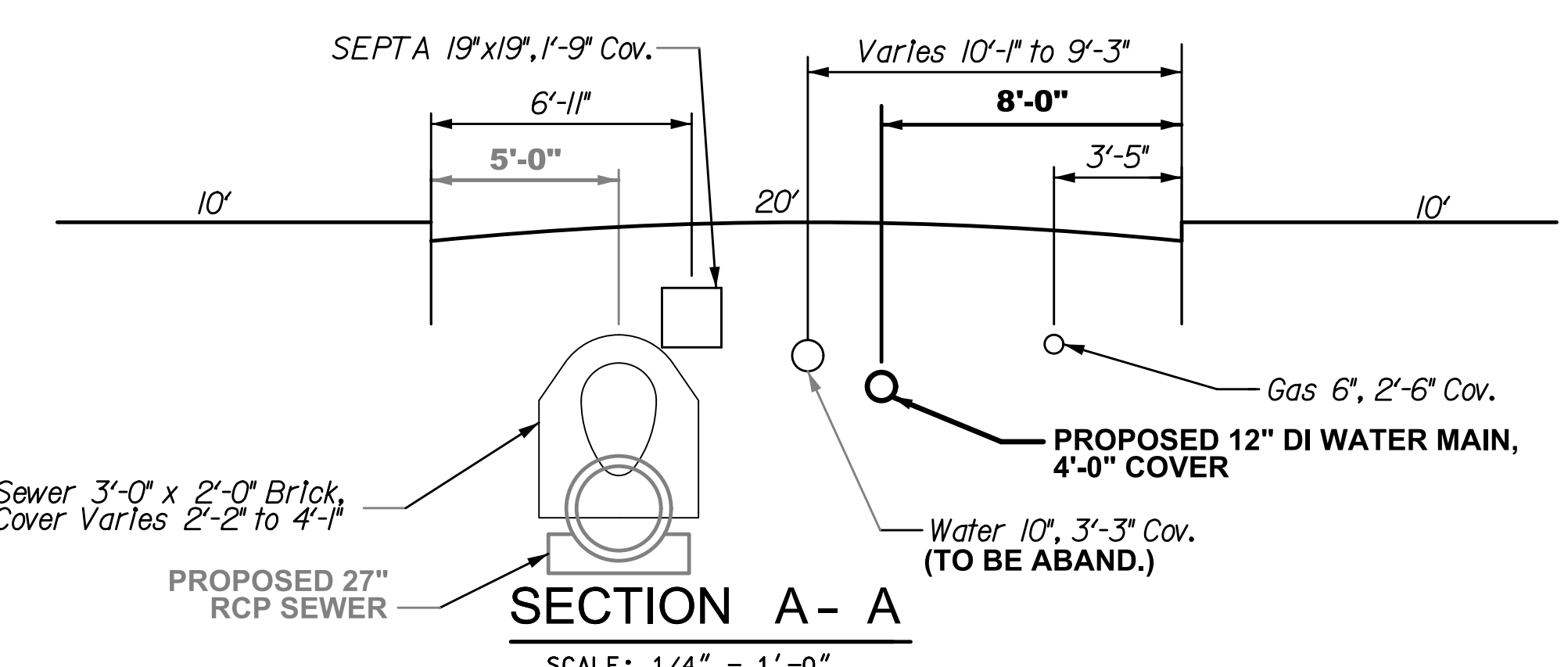
- 1 - STD. FIRE HYDRANT W/CCL
- 2 - 12" VALVES
- 2 - 8" VALVES
- 1 - 6" VALVE
- 1 - 12"X8" CROSS
- 1 - 8"x6" HYDRANT ANCHOR TEE
- 10 - 12" - 1/8 BENDS (4 VERT.)
- 4 - 8" - 1/8 BENDS (4 VERT.)
- 1 - 12" SLEEVE

PIPE TOTALS (THIS SHEET)

340'	+/-	12"	DUCTILE IRON WATER MAIN
130'	+/-	8"	DUCTILE IRON WATER MAIN
20'	+/-	6"	DUCTILE IRON WATER MAIN

PIPE TOTALS (ALL SHEETS)

815'	+/-	12"	DUCTILE IRON WATER MAIN
5'	+/-	10"	DUCTILE IRON WATER MAIN
875'	+/-	8"	DUCTILE IRON WATER MAIN
55'	+/-	6"	DUCTILE IRON WATER MAIN



- NOTES:**
- ① REMOVE FRAME & COVER - SEE SPEC'S.
 - ② REMOVE FIRE HYDRANT - SEE SPEC'S.
 - ③ REMOVE PIPE AND/OR FITTING & RECONNECT.
 - ④ ROTATE FITTINGS AS REQUIRED.

- GENERAL NOTES:**
- EXISTING WATER MAINS SHALL BE CUT & PLUGGED AS APPROVED BY THE CITY ENGINEER.
 - THE CONTRACTOR SHALL MAINTAIN A MINIMUM 6-INCH CLEARANCE BETWEEN ALL UNDERGROUND STRUCTURES AND THE NEW WATER MAINS.
 - BILLS OF MATERIAL AND PIPE TOTALS ARE FOR THE CONVENIENCE OF THE CONTRACTOR ONLY AND PAYMENT WILL BE MADE ONLY FOR THE ACTUAL AMOUNT OF PIPE AND APPURTENANCES INSTALLED.
 - FIRE HYDRANTS SHALL NOT BE CONSTRUCTED OR RELOCATED UNTIL SUCH LOCATIONS HAVE BEEN APPROVED BY THE WATER DEPARTMENT CONSTRUCTION DIVISION IN THE FIELD.
 - ALL DISTANCES SHOWN ARE IN DISTRICT STANDARD MEASUREMENT.

NOTICE:
PURSUANT TO THE REQUIREMENTS OF PENNSYLVANIA ACT 287 OF 1974 (THE UNDERGROUND UTILITY LINE PROTECTION ACT), AS AMENDED BY PA ACT 199 OF 2004, THE CONTRACTOR SHALL CONTACT THE PENNSYLVANIA ONE CALL SYSTEM AT 1-800-242-1776, AT LEAST 3 DAYS PRIOR TO EXCAVATION.
HIGHWAY DISTRICT NO. 3 WARD NO. 18
SURVEY DISTRICT NO. 5 WATER PLATE NO. 39
ONE CALL SERIAL NO. 1036047

WATER MAIN RELAY PROJECT

BELGRADE STREET
FROM
CREASE ST. TO MARLBOROUGH ST.

APPROVED _____ CHIEF, DESIGN BRANCH, ENGINEERING DIVISION	CITY OF PHILADELPHIA WATER DEPARTMENT
APPROVED _____ GENERAL MANAGER, PLANNING AND ENGINEERING	SCALES: PLAN 1" = 20' AND AS NOTED
APPROVED _____ WATER COMMISSIONER	

WORK NO. S-40599-RD (12 SHEETS)
SHEET NO. W-1 OF 8 SHEETS

DRAWN BY: CW	1/13/2014
PROJECT ENGR.: W. EL-MORSHEDY	2/11/2014
SUPERVISOR:	DATE:

These Sample Plans are being updated.
See Page 277 (Appendix IX cover page) for changes.

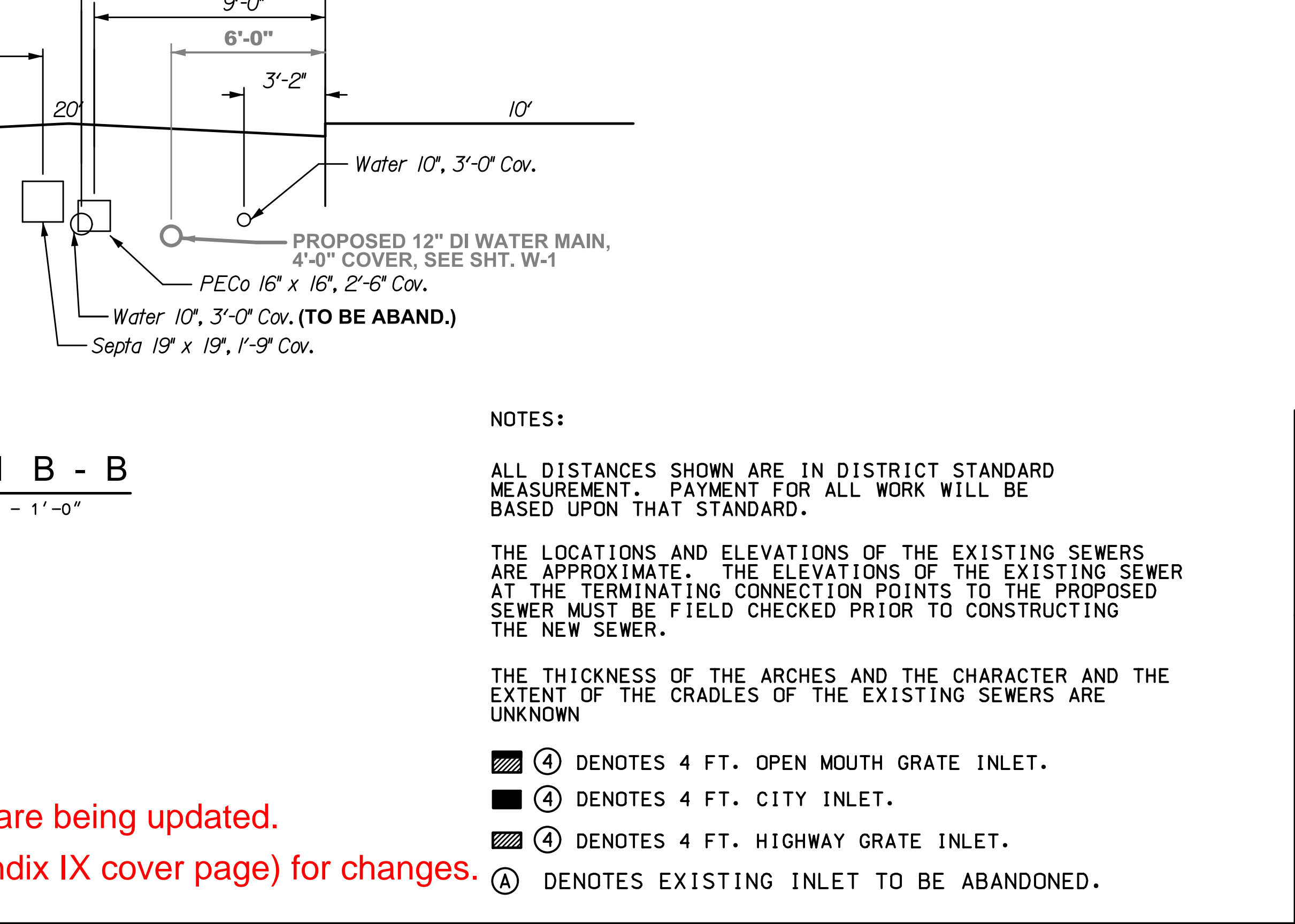
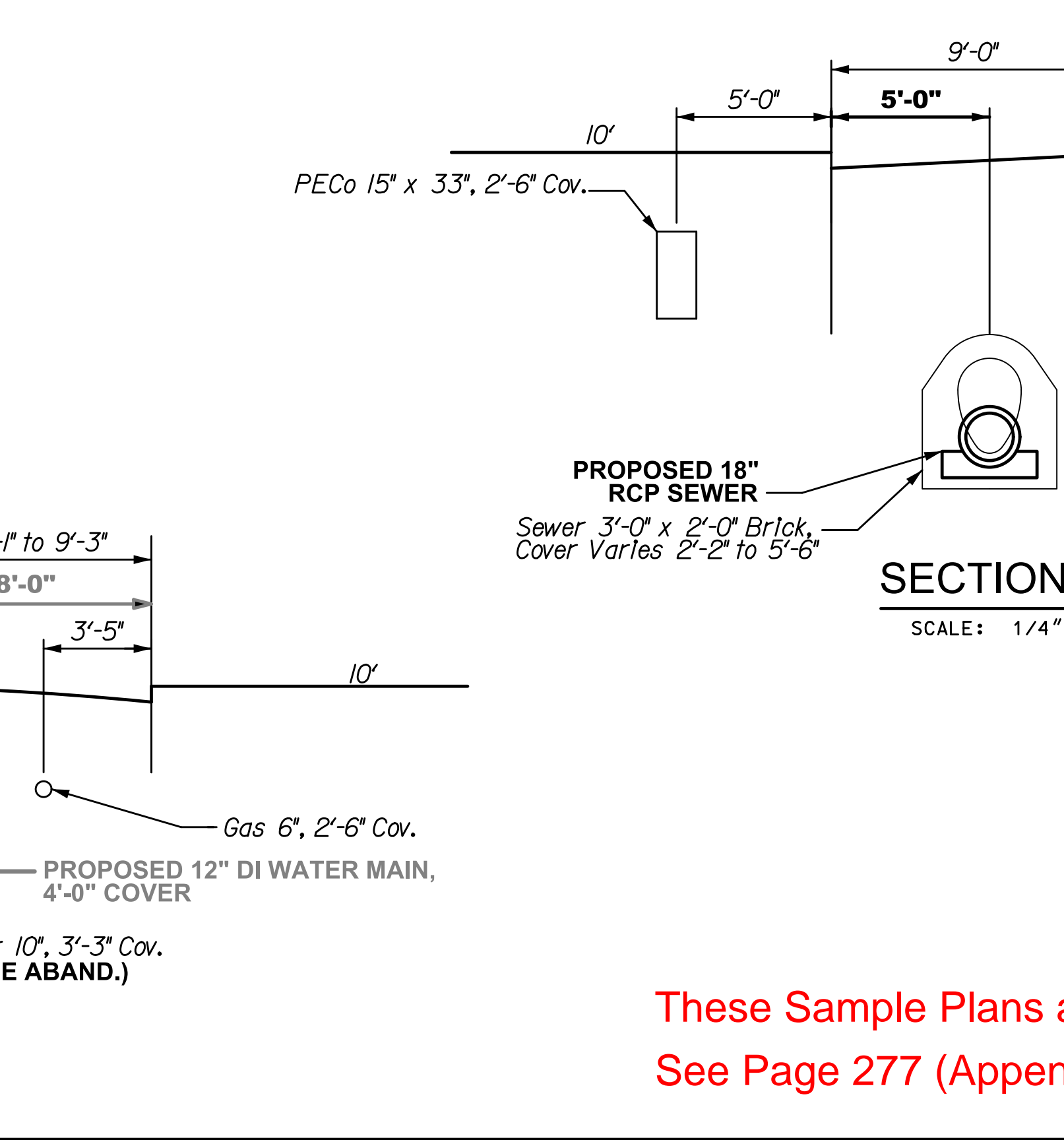
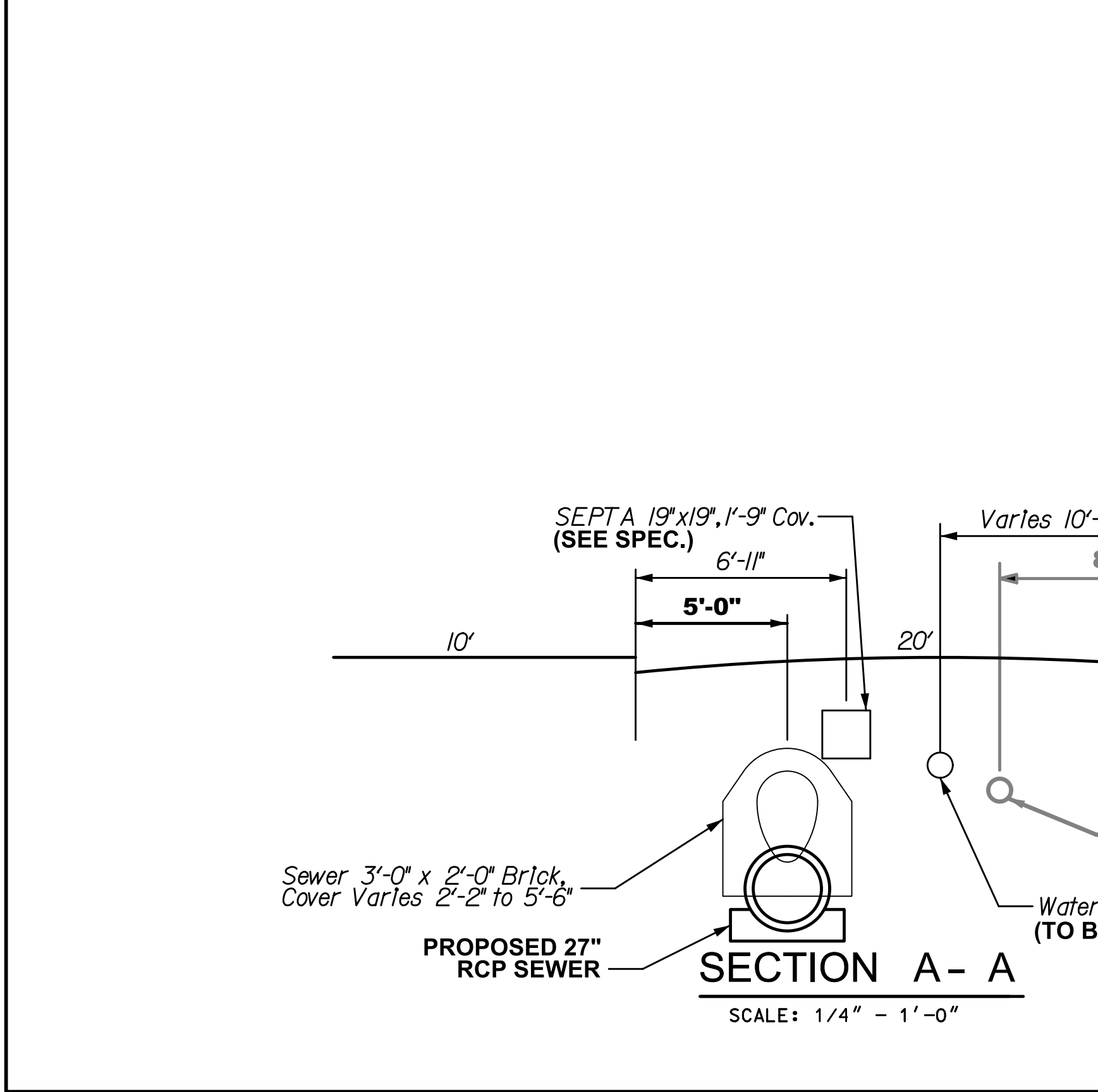
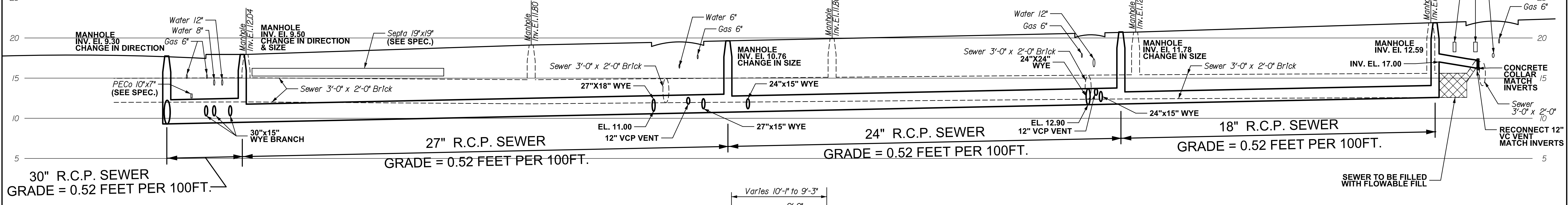
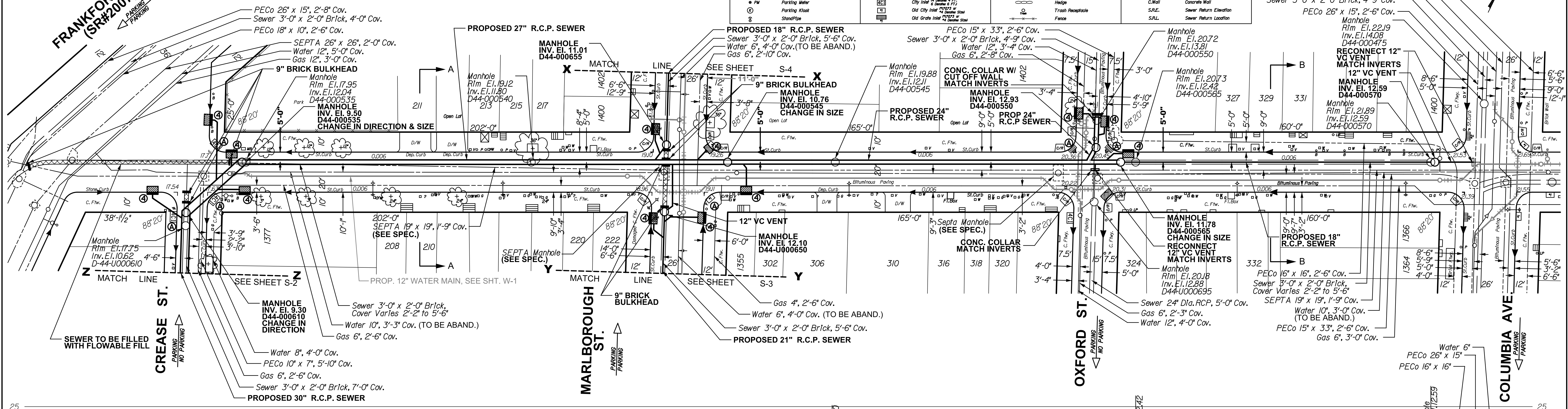
CONTROLLING BENCHMARK:
Marble Plinth on Northeast Corner of
Palmer and Thompson ST. 1301 Palmer
Elev. 21.27

FRANKFORD AVE.
(SR#2007)
PARKING
NO PARKING

BELGRADE STREET
NO PARKING
PARKING

LEGEND

□ V	Vent Box - Sewer	○ OS	Clean Out	⊕	Gas Valve	⊖	Blite Rock
□ W	Water Curb Box	□ BS	Down Spout	⊙	Door Sill	⊙	Downsizer
□ S	Gas Curb Box	□ HS	Half Box	⊙	Utility Manhole	⊙	C.Curb
□ P	Unknown Curb Box	□ HS	Hand Hole	⊙	Utility Manhole	⊙	G.Curb
○ LP	Pole	□ CS	Cable Handhole	⊙	Grating	⊙	St.Curb
○ LP	Lamp Post	□ CS	Survey Stone	⊙	Cellar Door	⊙	Concrete Footway
○ LP	PECO Pole	□ CS	Traffic Control Box (Above Ground)	⊙	Shape	⊙	Br. F.W.
○ LP	PECO Pole W/ Light	□ CS	Verizon Junction Box (Above Ground)	⊙	Parch	⊙	Sl. F.W.
○ SP	SEPTA Pole	□ CS	Sewer Manhole	⊙	Planter	⊙	Dep.Curb
○ TL	Traffic Light	□ CS	Water Valve	⊙	Br. Gutter	⊙	Brick Gutter
○ TS	Traffic Sign	□ CS	Fire Hydrant	⊙	Driveway	⊙	D.W.
○ P	Iron Pole	□ CS	Electropole Test Station	⊙	Tree Trunk Size In *	⊙	Stone Wall
○ B	Ballard	□ CS	Open Mouth Grate Inlet	⊙	Tree Stamp/Trunk In *	⊙	Brick Wall
○ PW	Parking Meter	□ CS	City Inlet 1/2 Dia. x 4 FT.	⊙	Hedge	⊙	Concrete Wall
○ PK	Parking Kiosk	□ CS	Old City Inlet 1/2 Dia. x 4 FT.	⊙	Trash Receptacle	⊙	S.W.E.
○ ST	Standpipe	□ CS	Old Grate Inlet 1/2 Dia. x 4 FT.	⊙	Fence	⊙	S.R.L.
○ ST	Standpipe	□ CS	Old Grate Inlet 1/2 Dia. x 4 FT.	⊙		⊙	Sewer Return Location



NOTICE:
PURSUANT TO THE REQUIREMENTS OF PENNSYLVANIA ACT 287 OF 1974 (THE UNDERGROUND UTILITY
LINE PROTECTION ACT), AS AMENDED BY PA ACT 199 OF 2004, THE CONTRACTOR
SHALL CONTACT THE PENNSYLVANIA ONE CALL SYSTEM AT 1-800-242-1776, AT LEAST
3 DAYS PRIOR TO EXCAVATION.
HIGHWAY DISTRICT NO. 3 WARD NO. 18
SURVEY DISTRICT NO. 5 DRAINAGE PLAT. NO. 42 OUTFALL NO. D-44
ONE CALL SERIAL NO. 1036047, 1036056

SEWER RECONSTRUCTION PROJECT
BELGRADE STREET
FROM
FRANKFORD AVE. TO COLUMBIA AVE.

CITY OF PHILADELPHIA
WATER DEPARTMENT

APPROVED: CHIEF, DESIGN BRANCH, ENGINEERING DIVISION
APPROVED: GENERAL MANAGER, PLANNING AND ENGINEERING
APPROVED: WATER COMMISSIONER

PLAN 1" = 20'
PROFILE 1" = 20'
VERT. 1" = 5'

WORK NO. S-40599-RD(12 SHEETS)
SHEET NO. S-1 OF 4 SHEETS

DRAWN BY: CW 1/13/2011
PROJECT ENGR.: W. EL-MORSHEDY 2/11/2011
SUPERVISOR: DATE

NOTES:
ALL DISTANCES SHOWN ARE IN DISTRICT STANDARD MEASUREMENT. PAYMENT FOR ALL WORK WILL BE BASED UPON THAT STANDARD.
THE LOCATIONS AND ELEVATIONS OF THE EXISTING SEWERS ARE APPROXIMATE. THE ELEVATIONS OF THE EXISTING SEWER AT THE TERMINATING CONNECTION POINTS TO THE PROPOSED SEWER MUST BE FIELD CHECKED PRIOR TO CONSTRUCTING THE NEW SEWER.
THE THICKNESS OF THE ARCHES AND THE CHARACTER AND THE EXTENT OF THE CRADLES OF THE EXISTING SEWERS ARE UNKNOWN

- ④ DENOTES 4 FT. OPEN MOUTH GRATE INLET.
- ⊙ DENOTES 4 FT. CITY INLET.
- ⊙ DENOTES 4 FT. HIGHWAY GRATE INLET.
- ⊙ DENOTES EXISTING INLET TO BE ABANDONED.

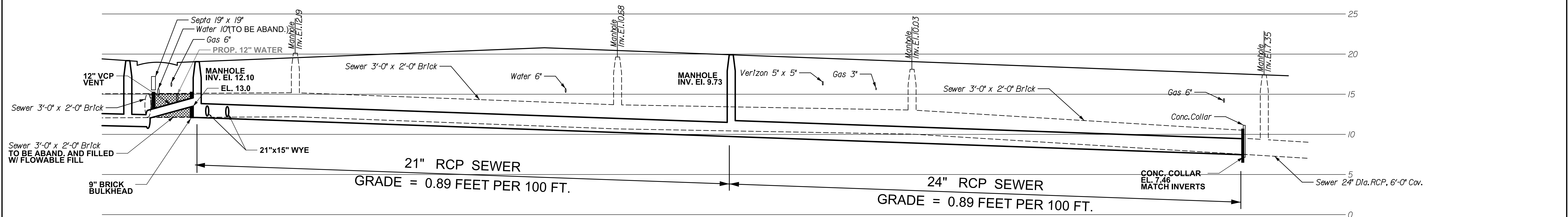
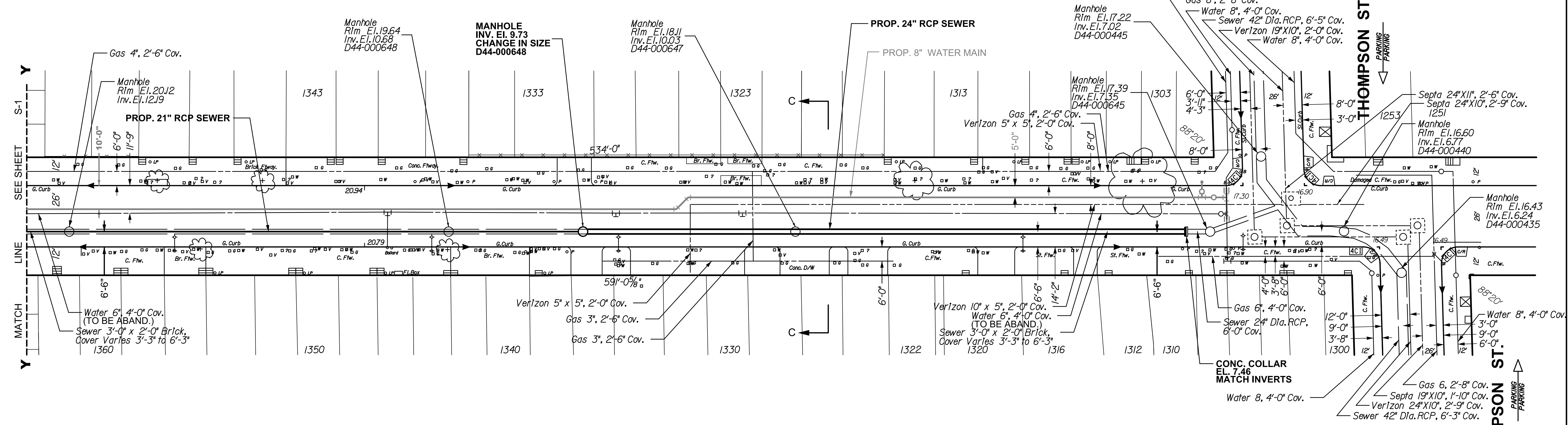
These Sample Plans are being updated.
See Page 277 (Appendix IX cover page) for changes.

CONTROLLING BENCHMARK:
Marble Plinth on Northeast Corner of
Palmer and Thompson ST. 1301 Palmer
Elev. 21.27

MARLBOROUGH STREET



LEGEND	
□ V	Vert Box - Sewer
□ W	Water Curb Box
□ S	Gas Curb Box
□ U	Unknown Curb Box
○ P	Pole
○ LP	Lamp Post
○ FEO	FEO Pole
○ FEO W/L	FEO Pole W/L
○ SP	SEPTA Pole
○ TL	Traffic Light
○ TS	Traffic Sign
○ IP	Iron Pole
○ B	Ballard
○ PM	Parking Meter
○ PK	Parking Kiosk
○ S	StandPipe
○ CC	Clean Out
○ DS	Down Spout
○ HB	Hand Hole
○ HH	Hand Hole
○ CAV	Cable Handhole
○ SS	Survey Stone
○ TCS	Traffic Control Box (Above Ground)
○ VJ	Verizon Junction Box (Above Ground)
○ W	Water Valve
○ WV	Water Valve
○ FV	Fire Hydrant
○ ETS	Electrical Test Station
○ OMT	Open Mouth Grade Inlet
○ CI	City Inlet
○ OCI	Old City Inlet
○ OGI	Old Grade Inlet
○ SV	Stand Valve
○ G	Gas Valve
○ DS	Door Sill
○ UM	Unknown Utility Manhole
○ U	Utility Manhole
○ H	Handhole
○ C	Cellar Door
○ S	Steps
○ P	Plinth
○ B	Bus Shelter
○ CR	Curb Ramp
○ D	Driveway
○ T	Tree Stump/W. Trunk In "
○ H	Hedge
○ TR	Trash Receptacle
○ F	Fence
○ R	River
○ C	Concrete Curb
○ G	Granite Curb
○ S	Stone Curb
○ C.F.W.	Concrete Footway
○ B.F.W.	Brick Footway
○ S.F.W.	Stone Footway
○ D.C.	Depressed Curb
○ B.G.	Brick Gutter
○ S.W.	Stone Wall
○ B.W.	Brick Wall
○ C.W.	Concrete Wall
○ S.R.E.	Sewer Return Elevation
○ S.R.L.	Sewer Return Location



NOTICE:
PURSUANT TO THE REQUIREMENTS OF PENNSYLVANIA ACT 287 OF 1974 (THE UNDERGROUND UTILITY
LINE PROTECTION ACT), AS AMENDED BY PA ACT 199 OF 2004, THE CONTRACTOR
SHALL CONTACT THE PENNSYLVANIA ONE CALL SYSTEM AT 1-800-242-1776, AT LEAST
3 DAYS PRIOR TO EXCAVATION.
HIGHWAY DISTRICT NO. 3 WARD NO. 18
SURVEY DISTRICT NO. 5 DRAINAGE PLAT. NO. 42 OUTFALL NO. D-44
ONE CALL SERIAL NO. 1036072

NOTES:
ALL DISTANCES SHOWN ARE IN DISTRICT STANDARD
MEASUREMENT. PAYMENT FOR ALL WORK WILL BE
BASED UPON THAT STANDARD.
THE LOCATIONS AND ELEVATIONS OF THE EXISTING SEWERS
ARE APPROXIMATE. THE ELEVATIONS OF THE EXISTING SEWER
AT THE TERMINATING CONNECTION POINTS TO THE PROPOSED
SEWER MUST BE FIELD CHECKED PRIOR TO CONSTRUCTING
THE NEW SEWER.
THE THICKNESS OF THE ARCHES AND THE CHARACTER AND THE
EXTENT OF THE CRADLES OF THE EXISTING SEWERS ARE
UNKNOWN

SEWER RECONSTRUCTION PROJECT

MARLBOROUGH STREET
FROM
BELGRADE ST. TO THOMPSON ST.

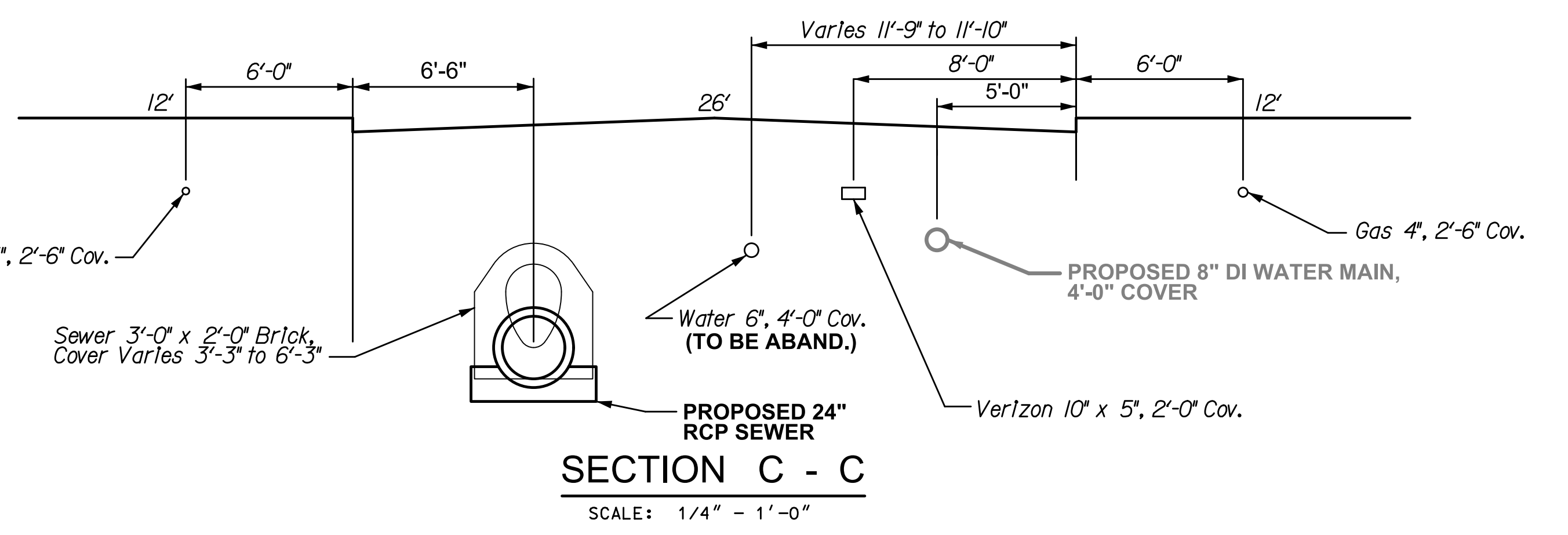
APPROVED _____ CHIEF, DESIGN BRANCH, ENGINEERING DIVISION

CITY OF PHILADELPHIA
WATER DEPARTMENT

SCALES:
PLAN 1" = 20'
PROFILE HORZ. 1" = 20'
VERT. 1" = 5'

WORK NO. S-40599-RD (12 SHEETS)
SHEET NO. S-3 OF 4 SHEETS

DRAWN BY CW 1/13/2014
PROJECT ENGR. W. EL-MORSHEDY 2/1/2014
SUPERVISOR _____ DATE _____



These Sample Plans are being updated.
See Page 277 (Appendix IX cover page) for changes.

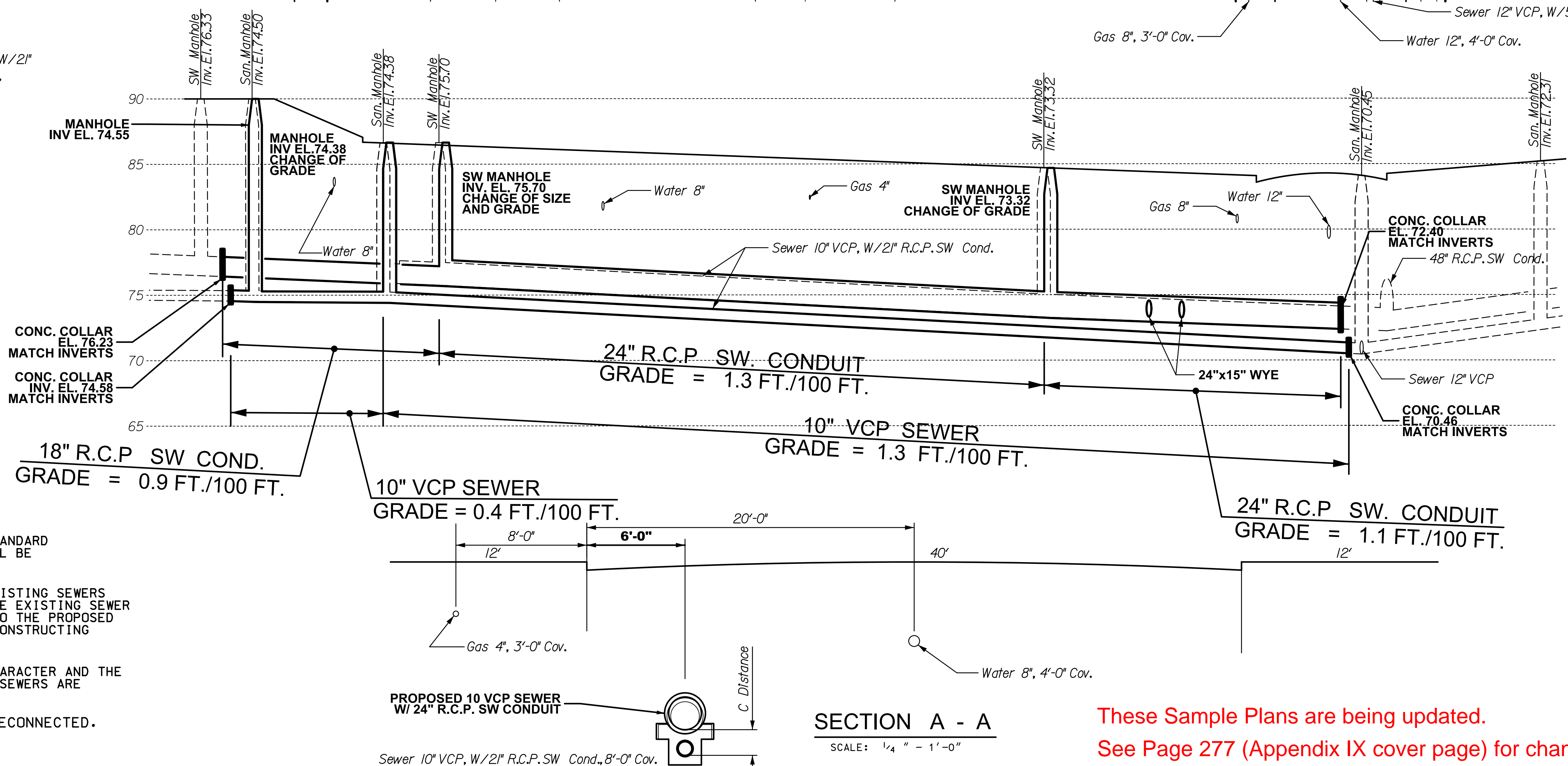
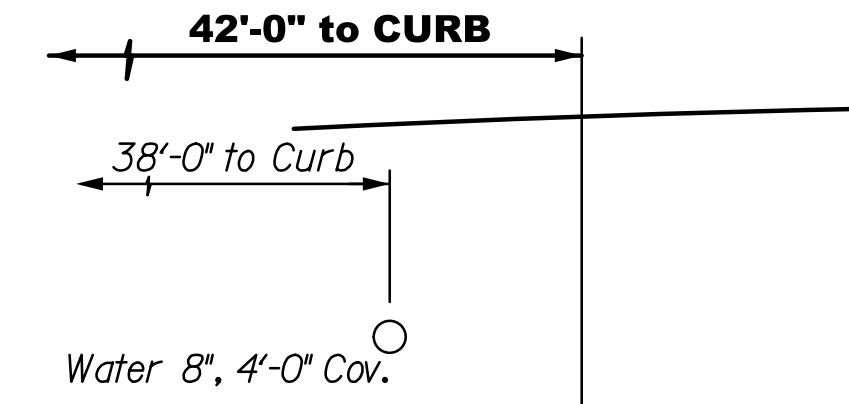
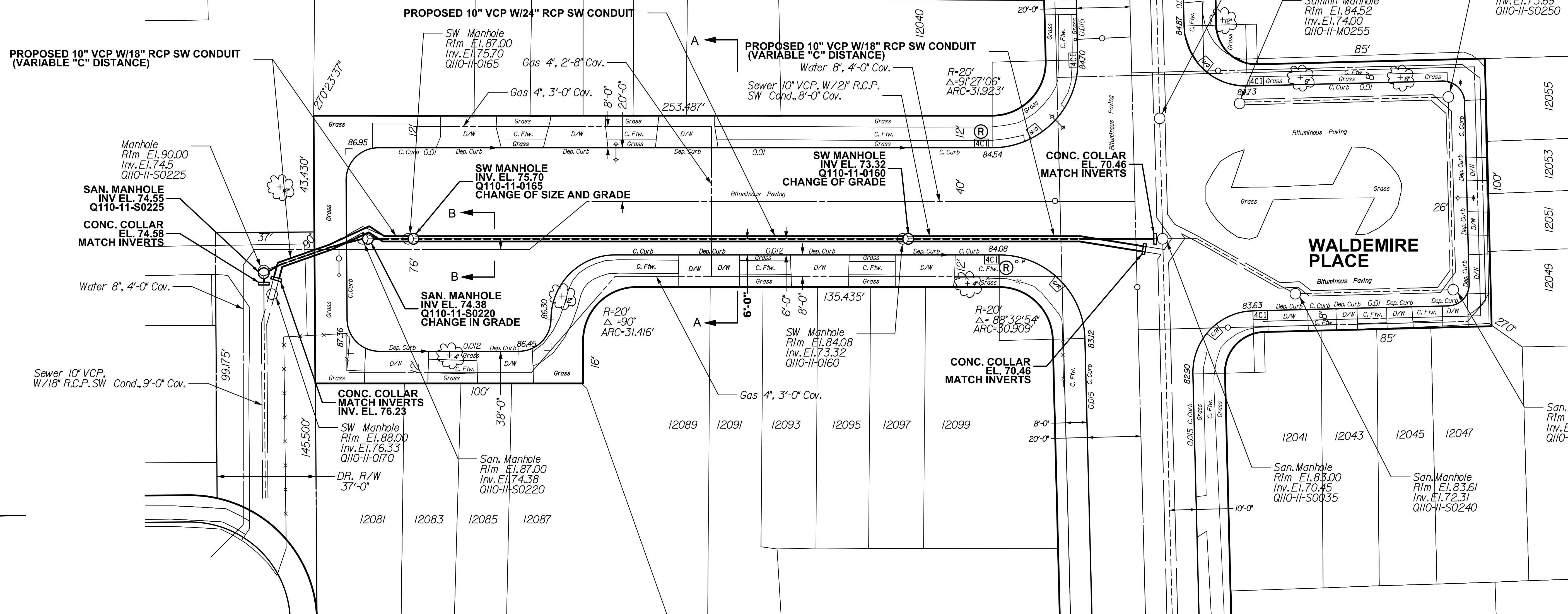
CONTROLLING BENCHMARK:
Survey Monument Found at N.W.C. of
Kelvin Street & Reg'na Street Elevation = 182.69

LEGION STREET



LEGEND

D.V	Vert Box - Sewer
D.W	Water Curb Box
D.G	Gas Curb Box
D.U	Unknown Curb Box
O.P	Pole
O.LP	Lamp Post
+	PECA Pole
+	PECA Pole W/Light
o.SP	SEPTA Pole
o.TL	Traffic Light
o.TS	Traffic Sign
+	Iron Pole
+	Bollard
+	Parking Meter
+	Parking Kiosk
+	StandPipe
+	Clean Out
o.DS	Down Spout
+	Mail Box
+	Hand Hole
+	Cable Handhole
+	Survey Stone
DSS	Traffic Control (Set Above Ground)
+	Vertical Junction (Set Above Ground)
+	Sewer Manhole
+	Water Valve
+	Fire Hydrant
+	Electrolysis Test Station
+	Open Mouth Grate Inlet
+	City Inlet 1/2 Diameter FT.
+	Old City Inlet 1/2 Diameter FT.
+	Old Grade Inlet 1/2 Diameter FT.
+	Gas Valve
+	Door Sill
+	Unknown Utility Manhole
+	Utility Manhole
+	Grating
+	Cellar Door
+	Steps
+	Parch
+	Pioneer
+	Bus Shelter
+	Curb Ramp
+	Tree/Trunk Size In *
+	Tree Stump/w Trunk In *
+	Hedge
+	Trash Receptacle
+	Fence
+	Blue Back
+	Domed Riser
+	Concrete Curb
+	Granite Curb
+	Slate Curb
+	Concrete Footway
+	Br. F.W.
+	Sl. F.W.
+	Sl. F.W.
+	Dep.Curb
+	Br. Gutter
+	D/W
+	St.Wall
+	Br.Wall
+	C.Wall
+	S.R.E.
+	S.R.L.



NOTICE:
PURSUANT TO THE REQUIREMENTS OF PENNSYLVANIA ACT 287 OF 1974 (THE UNDERGROUND UTILITY
LINE PROTECTION ACT), AS AMENDED BY PA ACT 199 OF 2004, THE CONTRACTOR
SHALL CONTACT THE PENNSYLVANIA ONE CALL SYSTEM AT 1-800-242-1776, AT LEAST
3 DAYS PRIOR TO EXCAVATION.
HIGHWAY DISTRICT NO. 6 WARD NO. 66
SURVEY DISTRICT NO. 4 DRAINAGE PLAT NO. 111 OUTFALL NO. Q-110-11
ONE CALL SERIAL NO. 20103021162

SEWER RECONSTRUCTION PROJECT

LEGION STREET
FROM
ABBY RD TO WALDEMIRE DR.

APPROVED _____ CHIEF, DESIGN BRANCH, ENGINEERING DIVISION

CITY OF PHILADELPHIA
WATER DEPARTMENT

PLAN 1" = 20'
PROFILE HORZ. 1" = 20'
VERT. 1" = 5'

WORK NO. S-40740-R
SHEET NO. S-2 OF 3 SHEETS

DRAWN BY	TK
PROJECT ENGR.	S. VLAM
SUPERVISOR	
DATE	

NOTES:

ALL DISTANCES SHOWN ARE IN DISTRICT STANDARD MEASUREMENT. PAYMENT FOR ALL WORK WILL BE BASED UPON THAT STANDARD.

THE LOCATIONS AND ELEVATIONS OF THE EXISTING SEWERS ARE APPROXIMATE. THE ELEVATIONS OF THE EXISTING SEWER AT THE TERMINATING CONNECTION POINTS TO THE PROPOSED SEWER MUST BE FIELD CHECKED PRIOR TO CONSTRUCTING THE NEW SEWER.

THE THICKNESS OF THE ARCHES AND THE CHARACTER AND THE EXTENT OF THE CRADLES OF THE EXISTING SEWERS ARE UNKNOWN

Ⓡ DENOTES EXISTING INLET TO BE RECONNECTED.

These Sample Plans are being updated.
See Page 277 (Appendix IX cover page) for changes.

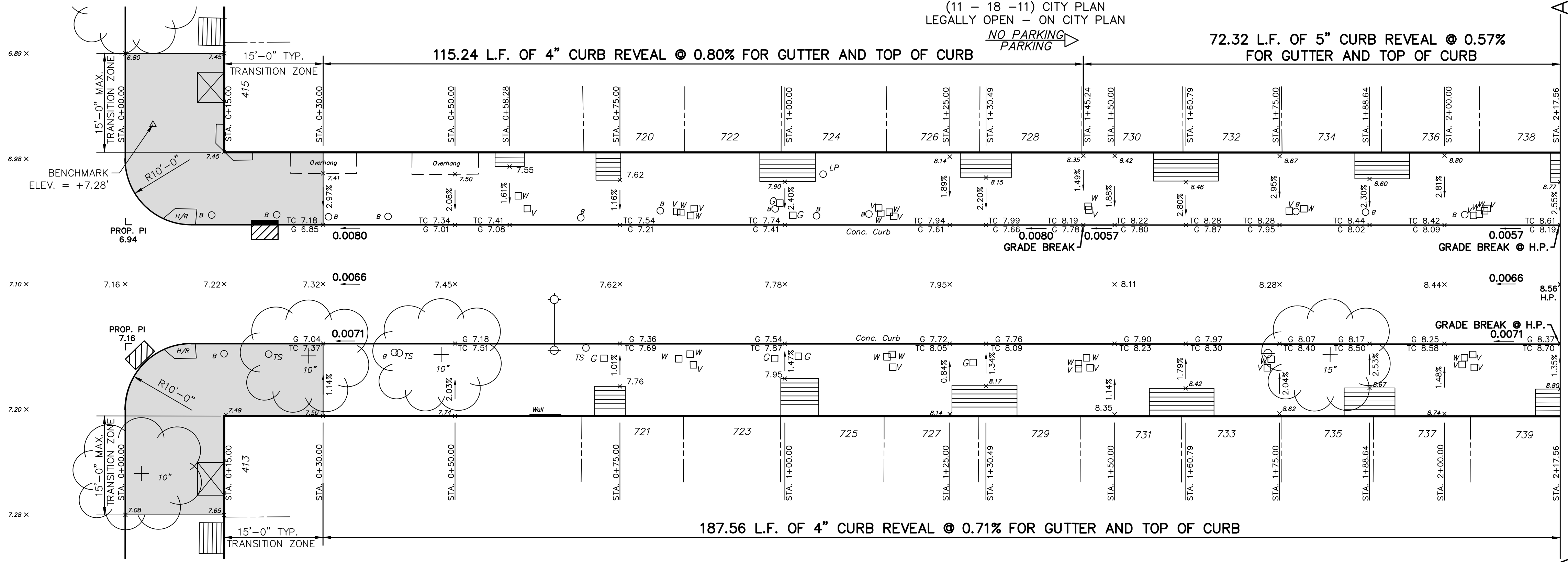
EVERGREEN TERRACE

(11 - 18 - 11) CITY PLAN
LEGALLY OPEN - ON CITY PLAN

CONTROLLING BENCHMARK
LOCATED AT THE NORTHWEST CORNER OF
EVERGREEN TERRACE AND CENTER STREET
BENCHMARK ELEVATION = +7.28' CITY DATUM
(PAINT MARKING ON SIDEWALK FROM SECOND
SURVEY DISTRICT)

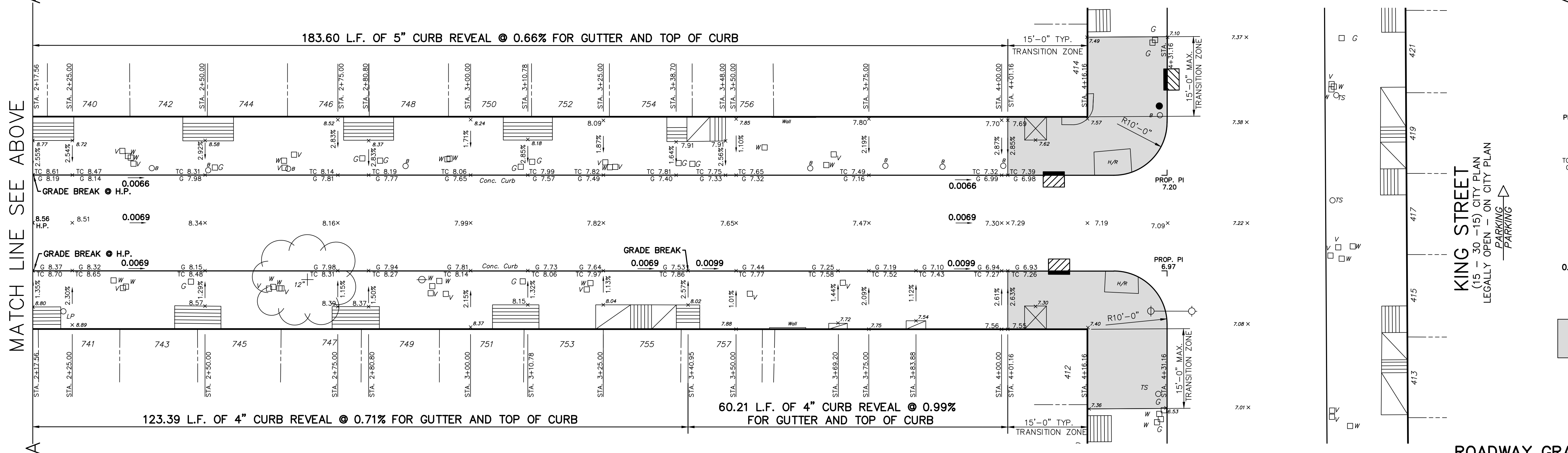
CENTER STREET
(15 - 30 - 15) CITY PLAN
LEGALLY OPEN - ON CITY PLAN
PARKING

Br. Ftw.



MATCH LINE SEE BELOW

MATCH LINE SEE ABOVE



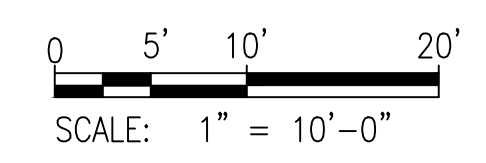
KING STREET
(15 - 30 - 15) CITY PLAN
LEGALLY OPEN - ON CITY PLAN
PARKING

LEGEND

- 7.57 x EXISTING SPOT ELEVATION
- PROP. PI 7.20 PROPOSED PI ELEVATION (AT TOP OF CURB)
- TC 7.42, G 7.00 x PROPOSED GUTTER & TOP OF CURB ELEVATION
- 7.19 x PROPOSED SPOT ELEVATION
- 1.39% PROPOSED FOOTWAY CROSS SLOPE
- 0.0069 PROPOSED ROADWAY LONGITUDINAL SLOPE
- CURB RAMP RECONSTRUCTION ZONE (15' FROM HOUSE LINE CORNER) DETAILED IN CURB RAMP DESIGN DRAWINGS

ROADWAY GRADING PLAN

**EVERGREEN TERRACE
FROM
CENTER STREET TO KING STREET**



NOTICE:
PURSUANT TO THE REQUIREMENTS OF PENNSYLVANIA ACT 287 OF 1974 (THE UNDERGROUND UTILITY LINE PROTECTION ACT), AS AMENDED BY PA ACT 199 OF 2004, THE CONTRACTOR SHALL CONTACT THE PENNSYLVANIA ONE CALL SYSTEM AT 1-800-242-1776, AT LEAST 3 DAYS PRIOR TO EXCAVATION.

HIGHWAY DISTRICT No. 1 WARD No. 39
SURVEY DISTRICT No. 2 WATER PLATE No. 13 PA ONE CALL SERIAL No. 01123581321

ALL DIMENSIONS MUST BE VERIFIED BY CONTRACTOR AND OWNER
MUST BE NOTIFIED OF ANY DISCREPANCIES BEFORE PROCEEDING
WITH THE WORK.

DATE

APPROVED
DISTRICT SURVEYOR, DEPARTMENT OF STREETS

CITY OF PHILADELPHIA
DEPARTMENT OF STREETS

SCALES:
PLAN 1" = 10'
AND AS NOTED

PWD WORK NO. S-31415-RDG
SHEET NO. R-1 OF 5 SHEETS

These Sample Plans are being updated.
See Page 277 (Appendix IX cover page) for changes.